

**WARNING**

BEWARE OF UNDERGROUND SERVICES

THE LOCATION OF UNDERGROUND SERVICES ARE APPROXIMATE ONLY AND THEIR EXACT POSITION SHOULD BE PROVEN ON SITE. NO GUARANTEE IS GIVEN THAT ALL EXISTING SERVICES ARE SHOWN.

- These plans are design plans and are provided as a guide only.
- No guarantee is provided in relation to their accuracy as they will NOT reflect any changes or alterations which may have occurred during construction.
- Service locations are indicative and MUST be confirmed with the relevant Authority.
- No responsibility is accepted for any damages or financial loss incurred due to the use of these plans.

**WARNING**

Watermain in vicinity  
Check depth of main prior  
to construction

Remove existing grated pit  
Construct GP 900 CPO at 1m  
offset from boundary

3m Sewer & Drainage  
Easement

3m Sewer & Drainage  
Easement

2m Drainage Easement

Extent of road earthworks

INTERSECTION DETAILS  
REFER TO SHEET 6

Turning Area:  
100mm depth  
Class 3 FCR

LIMIT OF WORKS

45  
802m<sup>2</sup>

44  
838m<sup>2</sup>

43  
966m<sup>2</sup>

13  
677m<sup>2</sup>

NS186.75  
FS186.75

Res 5  
35m<sup>2</sup>

NS186.35  
FS186.50

NS186.32  
FS186.31

NS185.77  
FS185.79

NS186.24  
FS186.97

NS187.22  
FS187.86

NS187.00  
FS186.83

NS186.66  
FS186.26

42  
624m<sup>2</sup>

41  
683m<sup>2</sup>

NS189.11  
FS189.33

NS188.56  
FS188.67

NS188.32  
FS189.16

NS188.43  
FS188.29

NS189.27  
FS189.53

NS189.33  
FS189.59

NS189.53  
FS189.62

NS189.39  
FS189.52

NS189.27  
FS189.53

NS189.33  
FS189.59

NS189.53  
FS189.62

NS189.39  
FS189.52

NS189.27  
FS189.53

NS189.33  
FS189.59

NS189.53  
FS189.62

NS189.39  
FS189.52

NS189.27  
FS189.53

NS189.33  
FS189.59

NS189.53  
FS189.62

NS189.39  
FS189.52

NS189.27  
FS189.53

NS189.33  
FS189.59

NS189.53  
FS189.62

NS189.39  
FS189.52

NS189.27  
FS189.53

NS189.33  
FS189.59

NS189.53  
FS189.62

NS189.39  
FS189.52

NS189.27  
FS189.53

NS189.33  
FS189.59

NS189.53  
FS189.62

NS189.39  
FS189.52

NS189.27  
FS189.53

NS189.33  
FS189.59

NS189.53  
FS189.62

NS189.39  
FS189.52

NS189.27  
FS189.53

NS189.33  
FS189.59

NS189.53  
FS189.62

NS189.39  
FS189.52

NS189.27  
FS189.53

NS189.33  
FS189.59

NS189.53  
FS189.62

NS189.39  
FS189.52

NS189.27  
FS189.53

NS189.33  
FS189.59

NS189.53  
FS189.62

NS189.39  
FS189.52

NS189.27  
FS189.53

NS189.33  
FS189.59

NS189.53  
FS189.62

NS189.39  
FS189.52

NS189.27  
FS189.53

NS189.33  
FS189.59

NS189.53  
FS189.62

NS189.39  
FS189.52

NS189.27  
FS189.53

NS189.33  
FS189.59

NS189.53  
FS189.62

NS189.39  
FS189.52

NS189.27  
FS189.53

NS189.33  
FS189.59

NS189.53  
FS189.62

NS189.39  
FS189.52

NS189.27  
FS189.53

NS189.33  
FS189.59

NS189.53  
FS189.62

NS189.39  
FS189.52

NS189.27  
FS189.53

NS189.33  
FS189.59

NS189.53  
FS189.62

NS189.39  
FS189.52

NS189.27  
FS189.53

NS189.33  
FS189.59

NS189.53  
FS189.62

NS189.39  
FS189.52

NS189.27  
FS189.53

NS189.33  
FS189.59

NS189.53  
FS189.62

NS189.39  
FS189.52

NS189.27  
FS189.53

NS189.33  
FS189.59

NS189.53  
FS189.62

NS189.39  
FS189.52

NS189.27  
FS189.53

NS189.33  
FS189.59

NS189.53  
FS189.62

NS189.39  
FS189.52

NS189.27  
FS189.53

NS189.33  
FS189.59

NS189.53  
FS189.62

NS189.39  
FS189.52

NS189.27  
FS189.53

NS189.33  
FS189.59

NS189.53  
FS189.62

NS189.39  
FS189.52

NS189.27  
FS189.53

NS189.33  
FS189.59

NS189.53  
FS189.62

NS189.39  
FS189.52

NS189.27  
FS189.53

NS189.33  
FS189.59

NS189.53  
FS189.62

NS189.39  
FS189.52

NS189.27  
FS189.53

NS189.33  
FS189.59

NS189.53  
FS189.62

NS189.39  
FS189.52

NS189.27  
FS189.53

NS189.33  
FS189.59

NS189.53  
FS189.62

NS189.39  
FS189.52

NS189.27  
FS189.53

NS189.33  
FS189.59

NS189.53  
FS189.62

NS189.39  
FS189.52

NS189.27  
FS189.53

NS189.33  
FS189.59

NS189.53  
FS189.62

NS189.39  
FS189.52

NS189.27  
FS189.53

NS189.33  
FS189.59

NS189.53  
FS189.62

NS189.39  
FS189.52

NS189.27  
FS189.53

NS189.33  
FS189.59

NS189.53  
FS189.62

NS189.39  
FS189.52

NS189.27  
FS189.53

NS189.33  
FS189.59

NS189.53  
FS189.62

NS189.39  
FS189.52

NS189.27  
FS189.53

NS189.33  
FS189.59

NS189.53  
FS189.62

NS189.39  
FS189.52

NS189.27  
FS189.53

NS189.33  
FS189.59

NS189.53  
FS189.62

NS189.39  
FS189.52

NS189.27  
FS189.53

NS189.33  
FS189.59

NS189.53  
FS189.62

NS189.39  
FS189.52

NS189.27  
FS189.53

NS189.33  
FS189.59

NS189.53  
FS189.62

NS189.39  
FS189.52

NS189.27  
FS189.53

NS189.33  
FS189.59

NS189.53  
FS189.62

NS189.39  
FS189.52

NS189.27  
FS189.53

NS189.33  
FS189.59

NS189.53  
FS189.62

NS189.39  
FS189.52

NS189.27  
FS189.53

NS189.33  
FS189.59

NS189.53  
FS189.62

NS189.39  
FS189.52

NS189.27  
FS189.53

NS189.33  
FS189.59

NS189.53  
FS189.62

NS189.39  
FS189.52

NS189.27  
FS189.53

NS189.33  
FS189.59

NS189.53  
FS189.62

NS189.39  
FS189.52

NS189.27  
FS189.53

NS189.33  
FS189.59

NS189.53  
FS189.62

NS189.39  
FS189.52

NS189.27  
FS189.53

NS189.33  
FS189.59

NS189.53  
FS189.62

NS189.39  
FS189.52

NS189.27  
FS189.53

NS189.33  
FS189.59

NS189.53  
FS189.62

NS189.39  
FS189.52

NS189.27  
FS189.53

NS189.33  
FS189.59

NS189.53  
FS189.62

NS189.39  
FS189.52

NS189.27  
FS189.53

NS189.33  
FS189.59

NS189.53  
FS189.62

NS189.39  
FS189.52

NS189.27  
FS189.53

NS189.33  
FS189.59

NS189.53  
FS189.62

NS189.39  
FS189.52

NS189.27  
FS189.53

NS189.33  
FS189.59

NS189.53  
FS189.62

NS189.39  
FS189.52

NS189.27  
FS189.53

NS189.33  
FS189.59

NS189.53  
FS189.62

NS189.39  
FS189.52

NS189.27  
FS189.53

NS189.33  
FS189.59

NS189.53  
FS189.62

NS189.39  
FS189.52

NS189.27  
FS189.53

NS189.33  
FS189.59

NS189.53  
FS189.62

NS189.39  
FS189.52

NS189.27  
FS189.53

NS189.33  
FS189.59

NS189.53  
FS189.62

NS189.39  
FS189.52

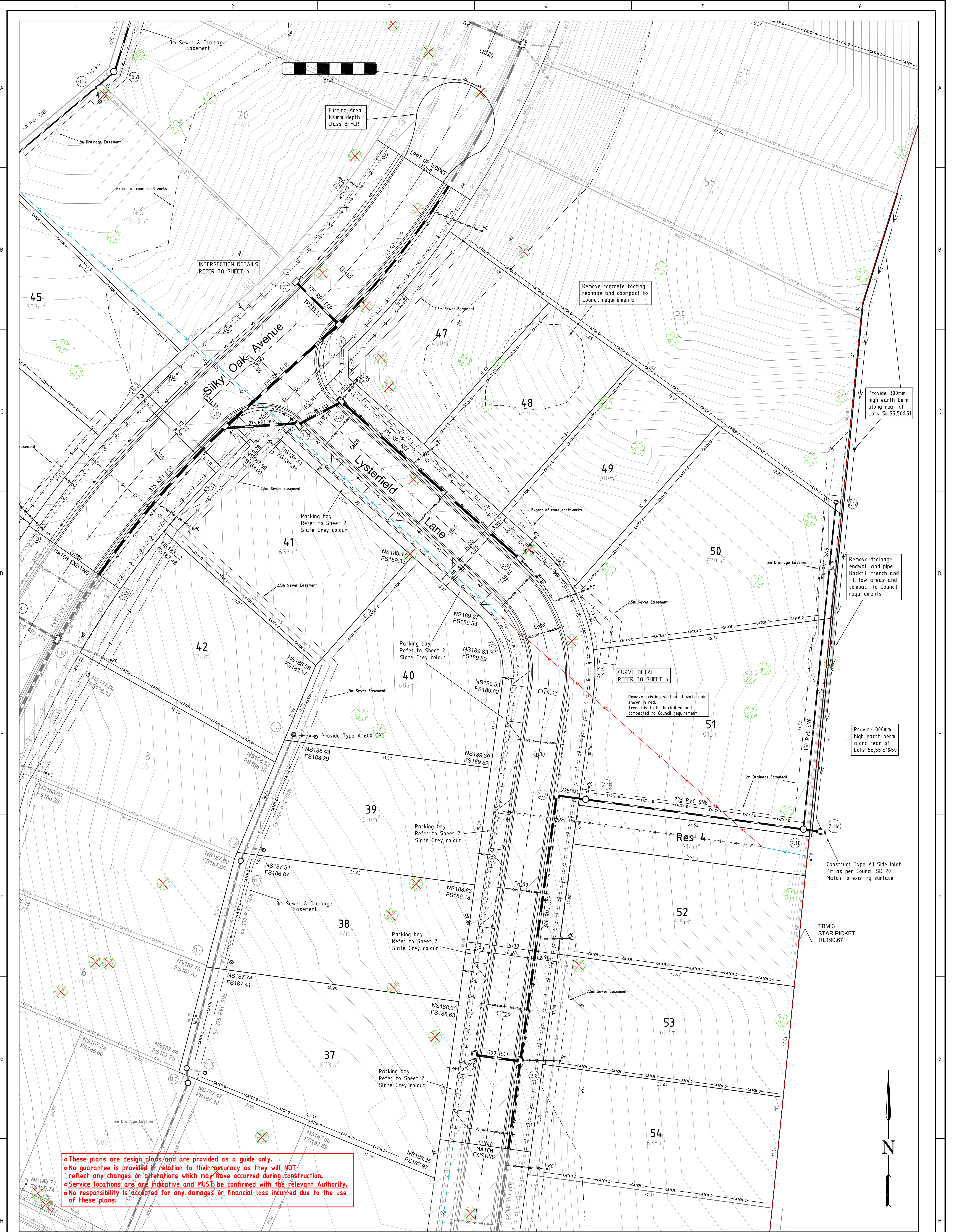
NS189.27  
FS189.53

NS189.33  
FS189.59

NS189.53  
FS189.62

NS189.39  
FS189.5





These plans are design plans and are provided as a guide only.  
No guarantee is provided in relation to their accuracy as they will NOT reflect any changes or alterations which may have occurred during construction.  
Service locations are indicative and MUST be confirmed with the relevant Authority.  
No responsibility is accepted for any damages or financial loss incurred due to the use of these plans.

**WARNING**  
BEWARE OF UNDERGROUND SERVICES  
THE LOCATION OF UNDERGROUND SERVICES ARE APPROXIMATE ONLY AND THEIR EXACT POSITION SHOULD BE PROVEN ON SITE. NO GUARANTEE IS GIVEN THAT ALL EXISTING SERVICES ARE SHOWN.

PLEASE NOTE THAT CONTOURS SHOWN ON PLAN INDICATE THE APPROXIMATE FINISHED SURFACE

4	
5	
6	
7	
8	
9	
10	
11	
12	
13	
14	
15	
16	
17	
18	
19	
20	
21	
22	
23	
24	
25	
26	
27	
28	
29	
30	
31	
32	
33	
34	
35	
36	
37	
38	
39	
40	
41	
42	
43	
44	
45	
46	
47	
48	
49	
50	
51	
52	
53	
54	
55	
56	
57	
58	
59	
60	
61	
62	
63	
64	
65	
66	
67	
68	
69	
70	
71	
72	
73	
74	
75	
76	
77	
78	
79	
80	
81	
82	
83	
84	
85	
86	
87	
88	
89	
90	
91	
92	
93	
94	
95	
96	
97	
98	
99	
100	

Designed	R. Davidson	Jun 2010
Checked	A. Merrens	Jun 2010
Approved		

**TERRACO**  
Civil Engineers  
Project Managers  
Development Consultants

**Terraco P/L**  
ABN 12 681 695 776  
Corner Jewell Court  
& Rowena Street  
Bendigo VIC 3550  
Ph: 03 5442 5799  
Fax: 03 5441 5586  
E: info@terraco.com.au

Scale (m) 1:250  
All lengths are in metres  
and all levels are to Australian Height Datum  
(Original Sheet Size is A3)  
Drawing File: 10049 Layout.dwg  
LTD Ref: PS 63824U  
Council Ref: PP 2007/85  
NERWA Ref: SYO 0818  
Our Ref: 10049  
Version: 1  
Sheet: 5 of 11

City of Wodonga - Wodonga  
**Arbor Estates Pty Ltd**  
**Silky Oak Estate - Stage Four**  
Layout Plan 2  
Council Ref: PP 2007/85  
NERWA Ref: SYO 0818  
Our Ref: 10049  
Version: 1  
Sheet: 5 of 11