

o These plans are design plans and are provided as a guide only.
 o No guarantee is provided in relation to their accuracy as they will NOT reflect any changes or alterations which may have occurred during construction.
 o Service locations are indicative and MUST be confirmed with the relevant Authority.
 o No responsibility is accepted for any damages or financial loss incurred due to the use of these plans.

| 3 | Amend Pit 29.4 | 13/5/2014 |
|------------|----------------------|------------|
| 2 | Adjust basin | 21/2/2014 |
| 1 | Original Issue | 16/1/2014 |
| 0 | Draft | 15/11/2013 |
| Ver | Revision Description | Date |
| Designed | Checked | Approved |
| R. Dawborn | A. Mertens | |
| Feb 2014 | Feb 2014 | |

TERRACO
 Civil Engineers
 Project Managers
 Development Consultants

Terraco P/L
 ABN 12 681 695 776
 Corner Jewell Court
 & Rowena Street
 Bendigo Vic 3550
 Ph: 03 5442 5799
 Fax: 03 5441 5506
 E: info@terraco.com.au

Scale (m) 1:500 0 5 10

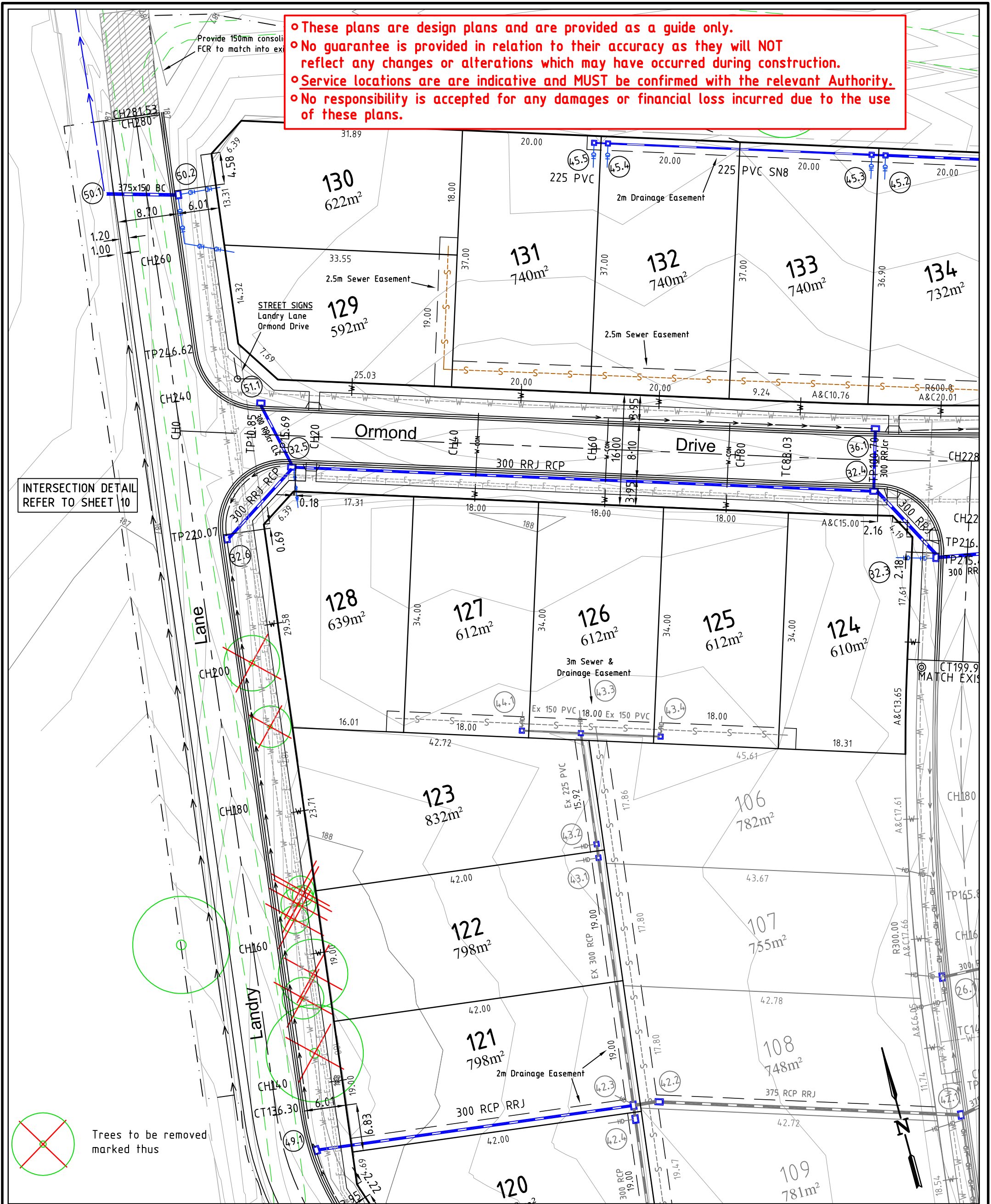
All lengths are in metres
 and all levels are to Australian Height Datum
 (Original Sheet Size is A3)

Drawing file: 13122 Layout.dwg
 LTO Ref: PS -

City of Greater Bendigo - Marong
 Arbor Estates Pty Ltd
 Marong Links - Stage Six
 Layout Plan

| | | | | |
|--------------|--------------|----------|---------|---------|
| Council Ref: | Coliban Ref: | Our Ref: | Version | Sheet |
| DS/404/2011 | ME 15275 | 13122 | 3 | 5 of 29 |

• These plans are design plans and are provided as a guide only.
 • No guarantee is provided in relation to their accuracy as they will NOT reflect any changes or alterations which may have occurred during construction.
 • Service locations are indicative and MUST be confirmed with the relevant Authority.
 • No responsibility is accepted for any damages or financial loss incurred due to the use of these plans.



INTERSECTION DETAIL REFER TO SHEET 10

Trees to be removed marked thus

PLEASE NOTE THAT CONTOURS SHOWN ON PLAN INDICATE THE APPROXIMATE FINISHED SURFACE

| 3 | | |
|------------|----------------------|------------|
| 2 | Adjust basin | 21/2/2014 |
| 1 | Original Issue | 16/1/2014 |
| 0 | Draft | 15/11/2013 |
| Ver | Revision Description | Date |
| Designed | Checked | Approved |
| R. Dawborn | A. Mertens | |
| Feb 2014 | Feb 2014 | |

TERRACO
 Civil Engineers
 Project Managers
 Development Consultants

Terraco P/L
 ABN 12 681 695 776
 Corner Jewell Court
 & Rowena Street
 Bendigo Vic 3550
 Ph: 03 5442 5799
 Fax: 03 5441 5506
 E: info@terraco.com.au

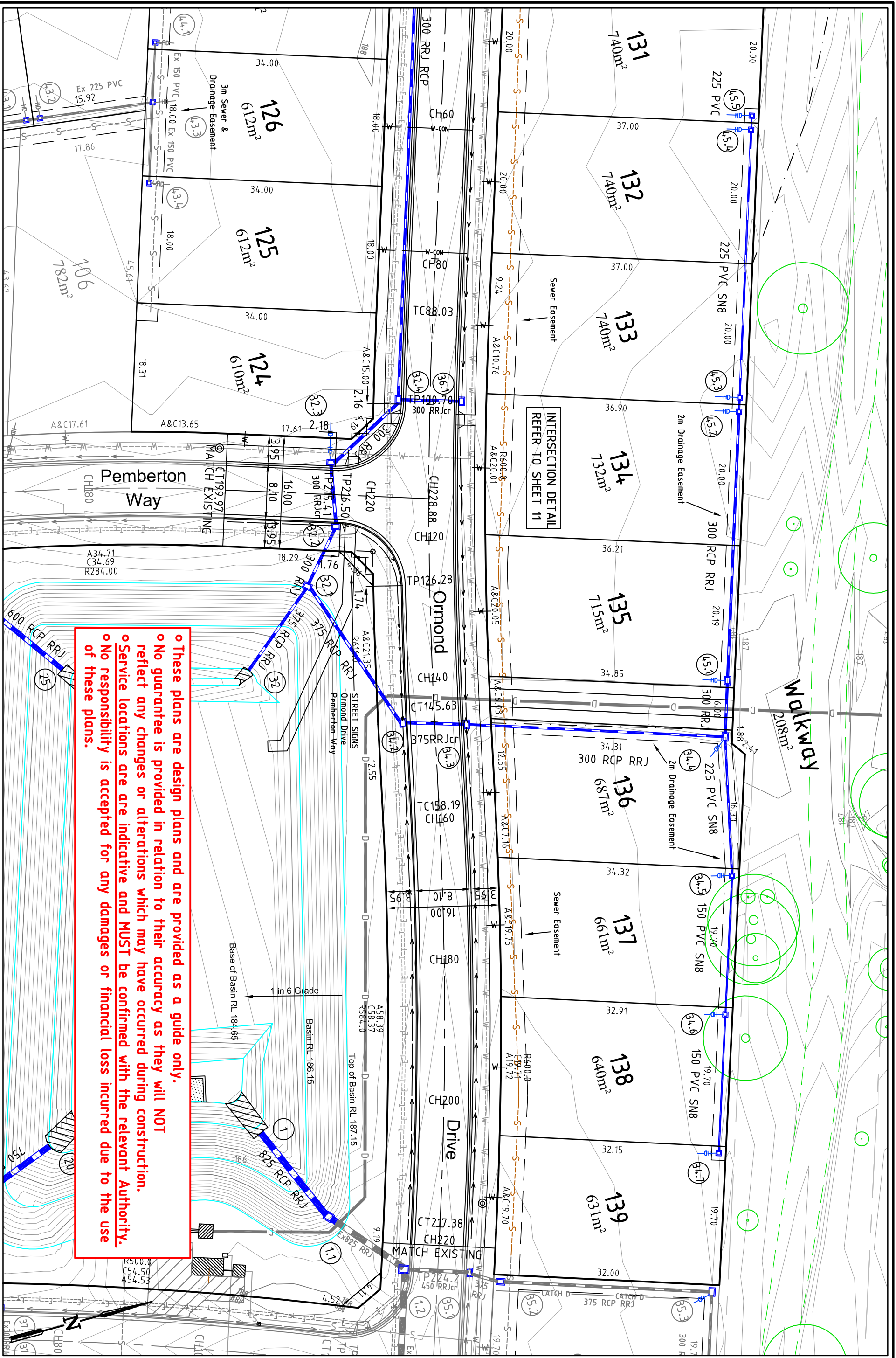
Scale (m) 1:500 0 5 10

All lengths are in metres
 and all levels are to Australian Height Datum
 (Original Sheet Size is A3)

Drawing file: 13122 Layout.dwg
 LTO Ref: PS -

City Of Greater Bendigo - Marong
 Arbor Estates Pty Ltd
 Marong Links - Stage Six
 Layout Plan 2

| | | | | |
|--------------|--------------|----------|---------|---------|
| Council Ref: | Coliban Ref: | Our Ref: | Version | Sheet |
| DS/404/2011 | ME 15275 | 13122 | 2 | 6 of 29 |



o These plans are design plans and are provided as a guide only.
 o No guarantee is provided in relation to their accuracy as they will NOT reflect any changes or alterations which may have occurred during construction.
 o Service locations are are indicative and MUST be confirmed with the relevant Authority.
 o No responsibility is accepted for any damages or financial loss incurred due to the use of these plans.

| | | |
|---|----------------------|------------|
| 6 | Revision Description | Date |
| 5 | Original Issue | 15/11/2013 |
| 4 | Draft | 16/11/2014 |
| 3 | Adjust basin | 21/2/2014 |
| 2 | Original Issue | 16/11/2014 |
| 1 | Draft | 15/11/2013 |
| 0 | Revision Description | Date |

| | | |
|----------|------------|----------|
| Designed | R. Dawbarn | Feb 2014 |
| Checked | A. Mertens | Feb 2014 |
| Approved | | |

Notes/Legend

PLEASE NOTE THAT CONTOURS SHOWN ON PLAN INDICATE THE APPROXIMATE FINISHED SURFACE CONTOUR INTERVAL 0.1m

TERRACO

Civil Engineers
Project Managers
Development Consultants

ABN 12 681 695 776
Corner Jewell Court
& Rowena Street
Bendigo VIC 3550
Ph: 03 5442 5799
E: info@terraco.com.au

| | |
|----------------------------------|----------------------|
| Scale (m) | 1500 0 5 10 |
| Drawing file: | LTO Ref: DS/404/2011 |
| City of Greater Bendigo - Marong | Our Ref: ME 15275 |
| Arbor Estates Pty Ltd | Version 2 |
| Marong Links - Stage Six | Sheet 7 of 29 |
| Layout Plan 3 | |