

HOUSE & LAND

Sanctuary
RANGE

STAY COOL WITH \$10,000 TOWARDS YOUR NEW HOME COOLING



COOLOOLA 208

\$690,587*



4



2



2

TOTAL (sqgs)	22.36
TOTAL (m ²)	207.69
WIDTH (m)	14.26
LENGTH (m)	18.39

LOT 203 13 GILFORD ST, MARONG VIC 3515

LAND: 652m²

Features & Inclusions:

900mm Stainless Steel Appliances

Concrete driveway allowance

Dishwasher

Double Glazed Windows

Ducted Cooling

Ducted Heating

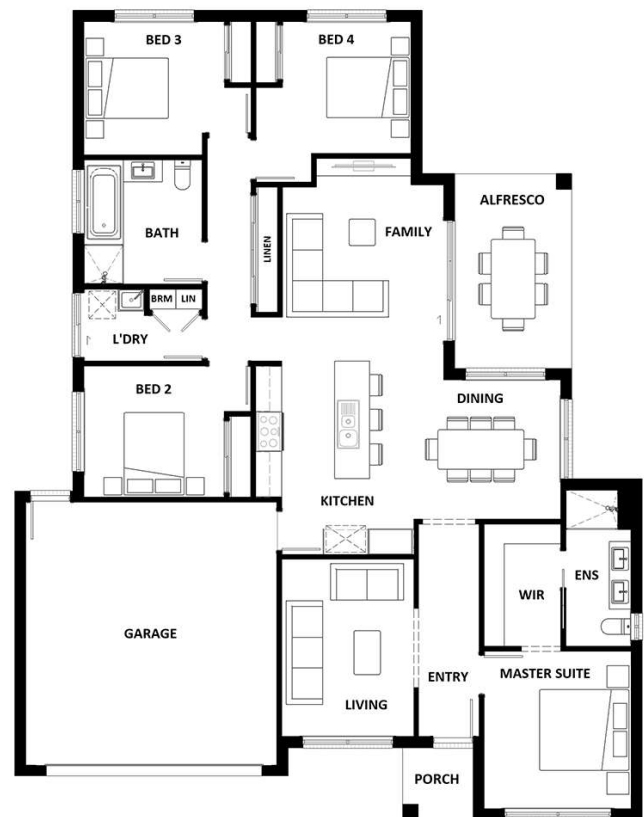
Vinyl planks, carpet and tiles throughout

Solar Power System

For more information contact:

Jenny Cushing 0428 145 132

Builder Licence: DB-U 23618



*Dimensions, photographs, floor plans and facade images are approximate and for illustrative purposes only. They are not drawn to scale. The dimensions provided of "width" and "length" are the actual dimensions of the completed house including alfresco areas (where applicable). It is the home owner's responsibility to ensure that all applicable council regulations and estate requirements are met. Subject to land availability, pricing and site costs unless advertised as a 'fixed price package'. Driveway size based on builder's preferred siting. Check with your local builder for builder's standard range and inclusions. Photographs may include optional features or items that are not supplied by Hotondo Homes. Hotondo Homes reserves the right to change plans, specifications, materials and suppliers without notice. For more information visit your local builder or hotondo.com.au.

