

GENERAL NOTES

This fill plan shows details of works affecting the natural surface of the land, being fill placed on the land to the extent and depth shown on this plan.

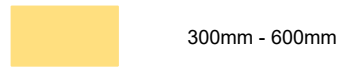
The depth of fill is based on the as constructed finished surface.

This plan does not show any other fill which may have been placed on the land.

Any grading or spreading to correct minor surface irregularities less than 300mm in depth is not shown.

Depths shown are not recommended foundation depths.

FILL DEPTHS



Printed: 2024-05-13 14:36:40

6			Drafted	Checked
5			T.Davies	R.Dawborn
4			May 2024	May 2024
3			Approved	
2				
1	Original Issue	13/05/2024		
0	Draft	-		
Ver	Revision Description	Date		

Notes/Legend	
--------------	--

TERRACO
 Civil Engineers
 Project Managers
 Development Consultants

Terraco P/L
 ABN 12 681 695 776
 9 Jewell Court
 East Bendigo, Vic 3550
 Ph: 03 5442 5799
 Fax: 03 5441 5506
 E: info@terraco.com.au
 Web: www.terraco.com.au

Scale (m) H 1:500

All lengths are in metres
 and all levels are to Australian Height Datum
 (Original Sheet Size is A3)

Drawing file: 23005 Final Fill Plan.dwg LTO Ref: PS907258D

City of Greater Bendigo - Jackass Flat
 Arbor Estates Pty Ltd
 Bartels Run - Stage 1
 Final Lot Fill Plan 1

Council Ref:	Water Auth. Ref:	Terraco Ref:	Version	Sheet
AM/536/2022	ME 23367	23005	1	1 of 2

GENERAL NOTES

This fill plan shows details of works affecting the natural surface of the land, being fill placed on the land to the extent and depth shown on this plan.


The depth of fill is based on the as constructed finished surface.

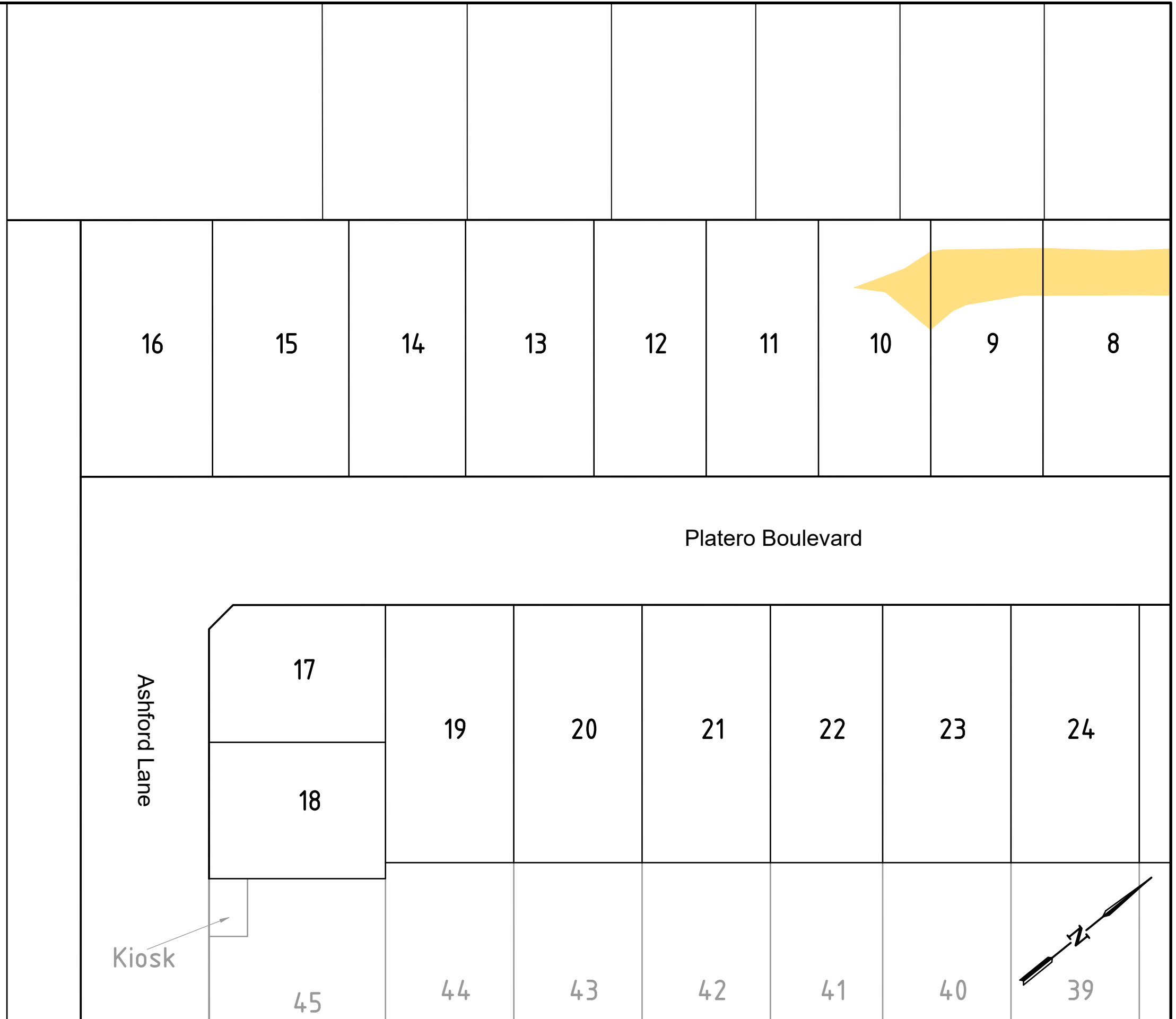
This plan does not show any other fill which may have been placed on the land.

Any grading or spreading to correct minor surface irregularities less than 300mm in depth is not shown.

Depths shown are not recommended foundation depths.

FILL DEPTHS

 300mm - 600mm




Printed: 2024-05-13 14:36:40

6			Drafted	Checked
5			T.Davies	R.Dawborn
4			May 2024	May 2024
3			Approved	
2				
1	Original Issue	13/05/2024		
0	Draft	-		
Ver	Revision Description	Date		

Notes/Legend

TERRACO
Civil Engineers
Project Managers
Development Consultants

Terraco P/L
ABN 12 681 695 776
9 Jewell Court
East Bendigo, Vic 3550
Ph: 03 5442 5799
Fax: 03 5441 5506
E: info@terraco.com.au
Web: www.terraco.com.au

Scale (m)  H 1:500

All lengths are in metres
and all levels are to Australian Height Datum
(Original Sheet Size is A3)

Drawing file: 23005 Final Fill Plan.dwg
LTO Ref: PS907258D

City of Greater Bendigo - Jackass Flat
Arbor Estates Pty Ltd
Bartels Run - Stage 1
Final Lot Fill Plan 2

Council Ref:	Water Auth. Ref:	Terraco Ref:	Version	Sheet
AM/536/2022	ME 23367	23005	1	2 of 2