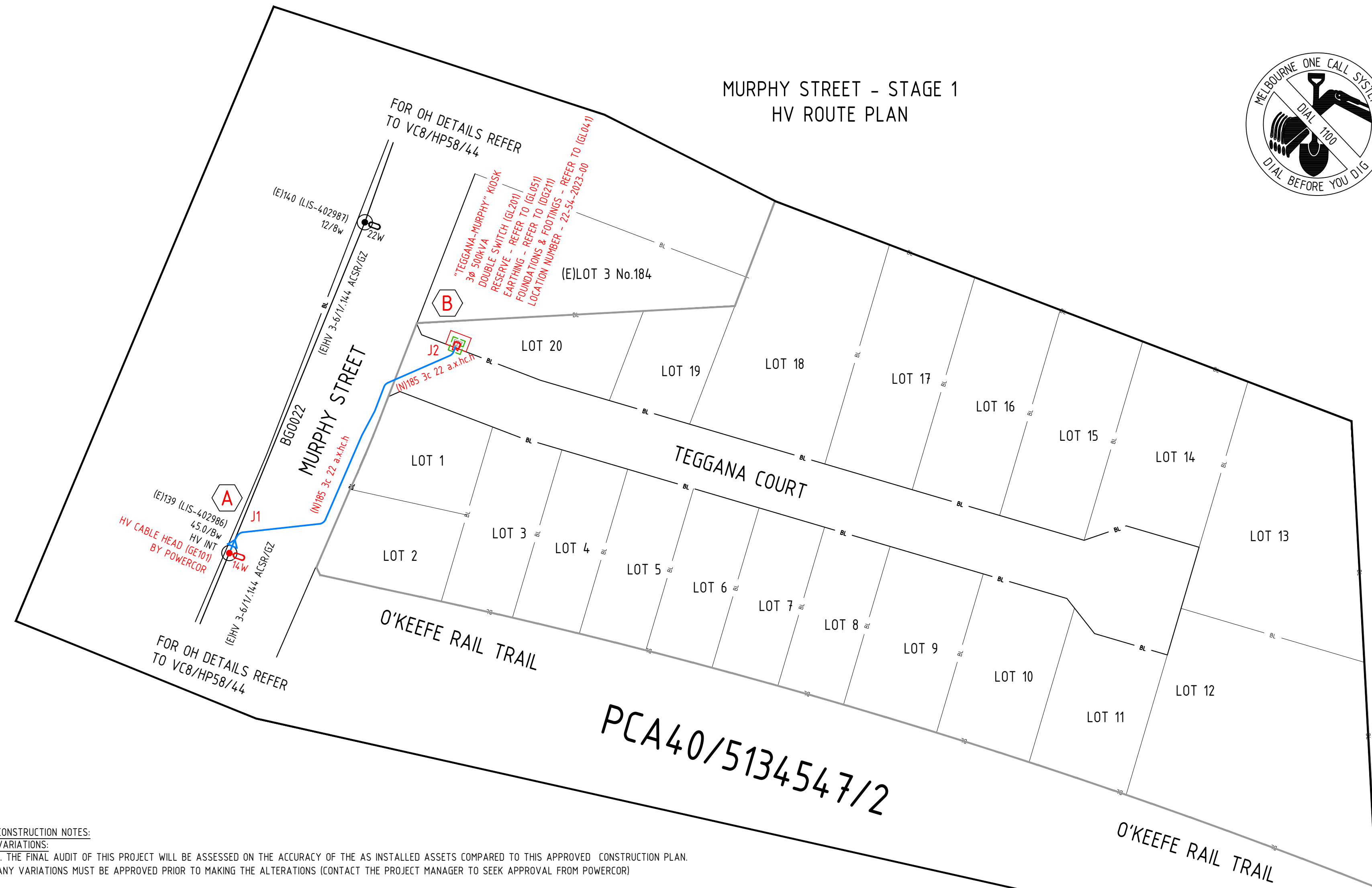




MURPHY STREET - STAGE 1 HV ROUTE PLAN



CONSTRUCTION NOTES:
VARIATIONS:
 1. THE FINAL AUDIT OF THIS PROJECT WILL BE ASSESSED ON THE ACCURACY OF THE AS INSTALLED ASSETS COMPARED TO THIS APPROVED CONSTRUCTION PLAN. ANY VARIATIONS MUST BE APPROVED PRIOR TO MAKING THE ALTERATIONS (CONTACT THE PROJECT MANAGER TO SEEK APPROVAL FROM POWERCOR)

DEPTHS OVER 15m
 2. IT IS NOT DESIRABLE FOR CABLES & OR CONDUITS TO BE INSTALLED AT A DEPTH GREATER THAN 15m. THIS INCLUDES DIPPING UNDER OTHER SERVICES. SHOULD IT BE NECESSARY TO INSTALL CABLES & OR CONDUITS GREATER THAN 15m DEEP APPROVAL MUST BE OBTAINED (IF NOT ALREADY SHOWN ON THIS PLAN). CABLES INSTALLED DEEPER THAN 15m MUST BE IN CONDUIT & AN ADDITIONAL SPARE CONDUIT INSTALLED

3. CONDUIT ENDS CANNOT BE AT EXCESSIVE DEPTHS FOR FUTURE ACCESS SAFETY REASONS. CONDUIT ENDS SHOULD BE RAISED UP TO NORMAL INSTALLATION DEPTHS WHERE POSSIBLE, BUT SHALL NOT BE DEEPER THAN 12m. IF CONDUITS NEED TO BE EXTENDED TO ACHIEVE THIS CONTACT THE ELECTRICAL PROJECT MANAGER TO OBTAIN APPROVAL

SECTIONS:
 4. IF CLEARANCE AND COVER CAN BE MAINTAINED THE FIRST CHOICE IS TO INSTALL POWER OVER THE TOP OF OTHER SERVICES. IF IT IS POSSIBLE TO INSTALL POWER OVER THE TOP OF OTHER SERVICES IGNORE THE SECTION AND INSTALL POWER OVER THE TOP (MINIMUM DEPTH OF 600mm). HOWEVER IF THIS IS NOT POSSIBLE (TO GO OVER THE TOP) REVERT TO THE SECTION PROVIDED. CABLES TO STAY WITHIN DEPTH RANGE GIVEN, OTHERWISE SEEK PROJECT MANAGER APPROVAL

LIVE CABLES:
 5. HV CABLE HEAD TERMINATION - CAUTION LIVE OH CONDUCTORS - NO GO ZONE APPLIES - A POWERCOR PERMIT TO WORK WILL BE REQUIRED PRIOR TO EXCAVATION. LEAVE SUFFICIENT HV CABLE FOR POWERCOR TO COMPLETE HV CHP AT TIE IN AT POINT "A". BURY CABLE AND INSTALL MARKER PIT AT CABLE END. COIL CABLE IF APPROPRIATE (OBSERVE MIN CABLE RADIUS). IF COILING IS NOT SUITABLE RUN CABLE NORTH OR SOUTH OF POLE UNDER HV OH. DO NOT RUN CABLE UP THE POLE FOR SAFETY REASONS. OPTION 2A CONTRACTOR TO INSTALL EARTH AS PER PCA STANDARDS - DG196 (WOOD POLE) & DG291 (CONCRETE POLE) - ONLY UNDERGROUND COMPONENTS. LEAVE EARTH COILED AT THE FOOT OF POLE FOR PCA TO COMPLETE AT TIE IN.

6. LV SERVICE CABLE HEAD TERMINATION - CAUTION LIVE OH CONDUCTORS - NO GO ZONE APPLIES - A POWERCOR PERMIT TO WORK WILL BE REQUIRED PRIOR TO EXCAVATION. ATTACH LVS UG CABLE TO POLE AND INSTALL ALL GE131 (WOOD) COMPONENTS BELOW THE 4m MARK, INCLUDING COVER GUARD. LEAVE SUFFICIENT CABLE FOR PCA TO COMPLETE CHP AT TIE-IN. CONTRACTOR SHALL NOT WORK ABOVE THE 4m MARK

7. BORE WORKS - THE NEW CONDUIT "H" TO "J" & "K" TO "L" WILL NEED TO BE INSTALLED VIA A DIRECTIONAL BORE. ENSURE INSTALLATION DETAILS ARE RECORDED ON A BORE LOG WHICH INCLUDES RUNNING CHAINAGE (EVERY 3m). AT EACH 3m CHAINAGE RECORD THE DEPTH FROM TOP OF CONDUIT, OFFSET FROM BL (IF APPLICABLE). LOCATE EXISTING STORM WATER, WATER & GAS VIA 'DIAL BEFORE YOU DIG' AND EXCAVATE SECTIONS OF ALL SERVICES TO PROVE LOCATIONS. ENSURE THAT THE NEW BORE MAINTAINS THE REQUIRED VERTICAL CLEARANCE OF 300mm TO STORM WATER, 225mm TO WATER & 150mm TO GAS.

8. SERVICE PITS TEGGANA CRT. DUE TO A CONDUIT OFF SET OF 10m, AND VARYING CONDUIT SPREAD, ALL SERVICE PITS ON THE SOUTH SIDE OF TEGGANA CRT NEED TO MAINTAIN A VERTICAL CLEARANCE OF 100mm TO Ø100 CONDUITS & 300mm TO Ø150 CONDUITS AS IT IS POSSIBLE THAT PART OF THE SERVICE MAY BE OVER CONDUIT. CONDUITS TO BE INSTALLED AT AN APPROPRIATE DEPTH (APPROX 10m), KEEPING IN MIND THE NEED TO HAVE CONDUIT ENDS NO DEEPER THAN 12m.

SERVICE TEE-JOINT ALLOCATION

ALL LOTS TO BE SERVICED WITH 35mm 4c LV SERVICE CABLE AND A DEDICATED PIT
 SERVICE TEE-JOINT ALLOCATION AND CIRCUIT (CCT) IDENTIFICATION IS AS FOLLOWS
 CCT#1 - CABLE ID 'D' AND CONDUIT 'D1' - MURPHY STREET
 CCT#2 - CABLE ID 'F' AND CONDUIT 'F1' - BL SIDE CCT TEGGANA COURT
 CCT#3 - CABLE ID 'G' AND CONDUIT 'G1' - BL SIDE MIDDLE CCT TEGGANA COURT
 CCT#4 - CABLE ID 'H' AND CONDUIT 'H1' - ROAD SIDE MIDDLE CCT TEGGANA COURT
 CCT#5 - CABLE ID 'J' AND CONDUIT 'J1' - ROAD SIDE CCT TEGGANA COURT
 CABLE ID REFERS TO ID IN SECTIONS.
 ALL SERVICE PITS ON THE SOUTH SIDE OF TEGGANA CRT NEED TO MAINTAIN A VERTICAL CLEARANCE OF 100mm TO Ø100 CONDUITS & 300mm TO Ø150 CONDUITS

HV TIE-IN WORKS

WORKS TO BE TIED IN BY POWERCOR
 AT (E) POLE 139 (ILIS-402986) POINT 'A' OP LOT 2 MURPHY STREET
 COMPLETE HV CHP (GE131)

LV TIE-IN WORKS

WORKS TO BE TIED IN BY POWERCOR
 AT (E) POLE 139 (ILIS-402986) POINT 'A' OP LOT 2 MURPHY STREET COMPLETE LV SERVICE CHP (PL) (GE131) & INSTALL PL14W LED - 5.5m MOUNTING HEIGHT, POLE MOUNT SHORT BRACKET (FE201) & 1Ø FOLCB 80A (EM531) 20A FUSE

PUBLIC LIGHTING SCHEDULE

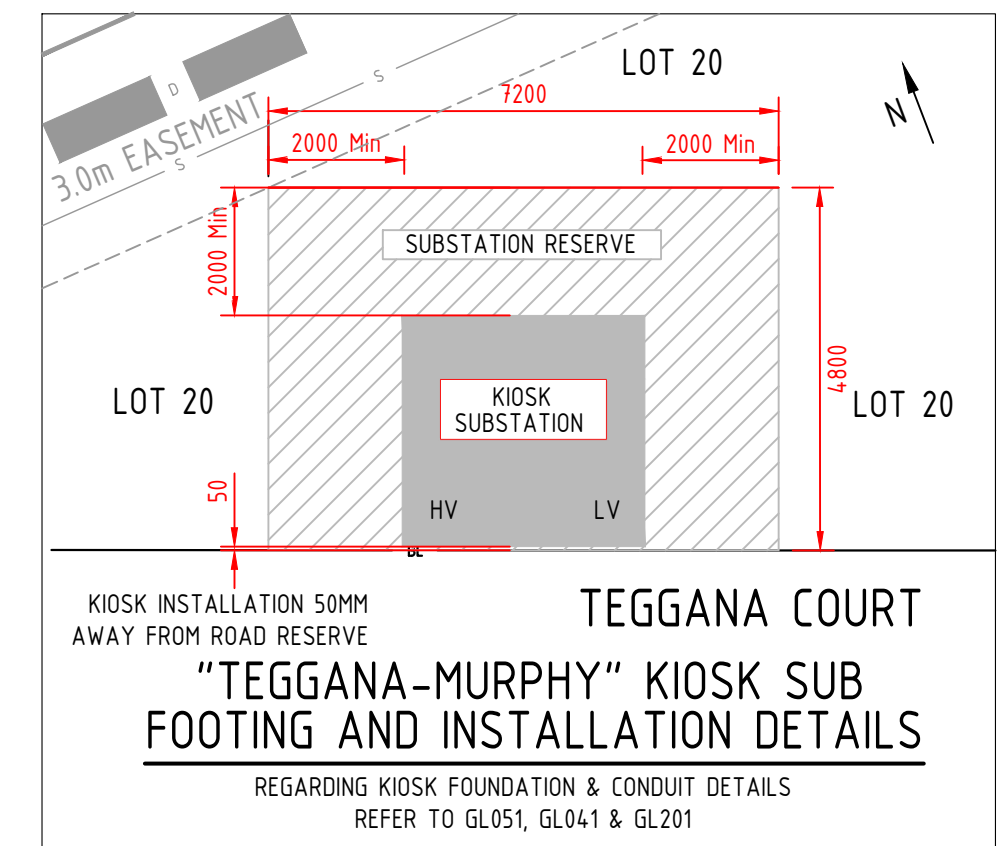
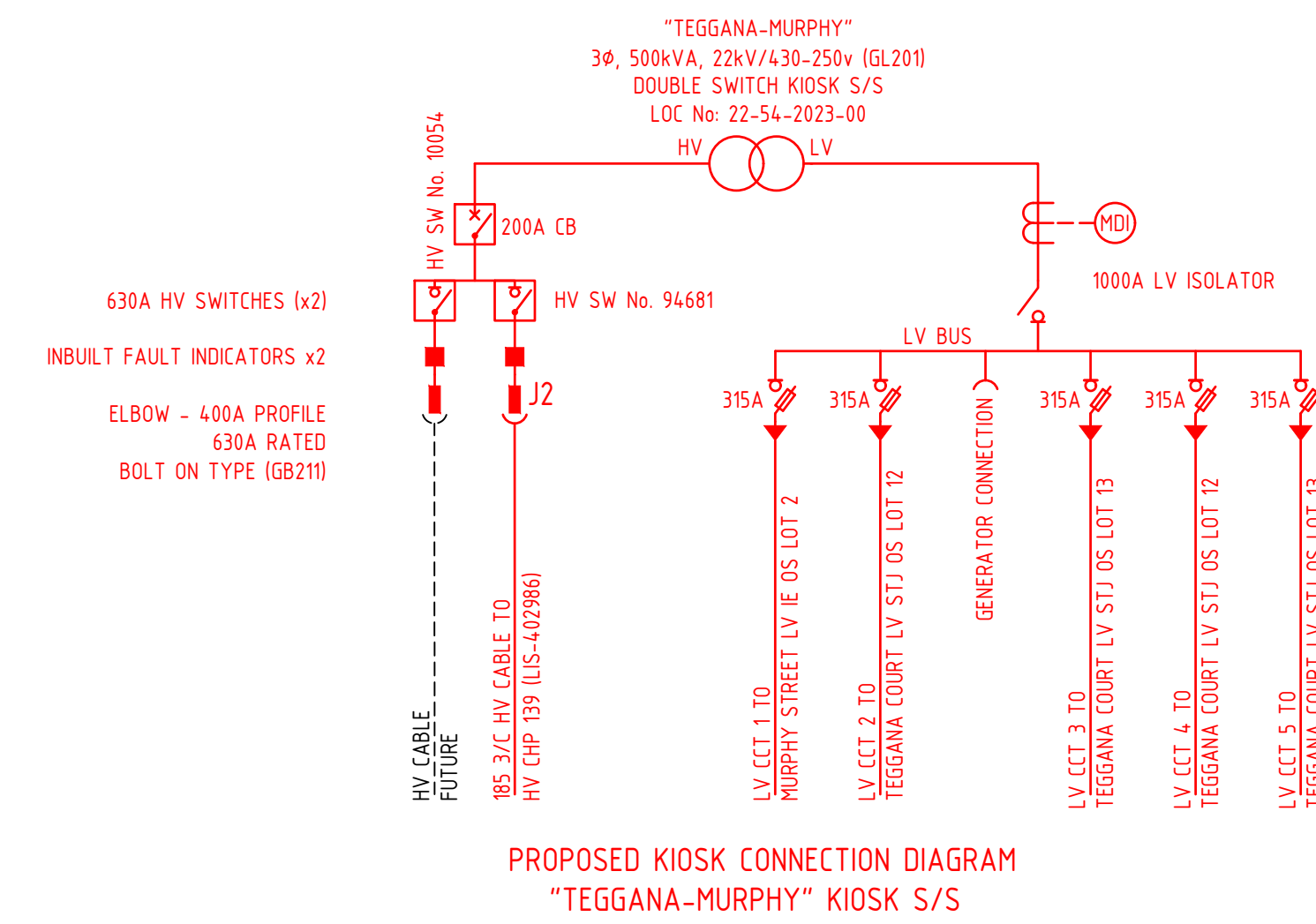
FOR PL POLE No.s	PL1-PL7
LANTERN	STANDARD
WATTAGE & TYPE	14W LED (L14)
MANUFACTURER	SYLVANIA
MODEL & CAT. No.	STREETLED3 13.7W SCD/JLC9A05L14
MOUNTING HEIGHT	5.50
COLOR	STANDARD
POLE:	STANDARD
MANUFACTURER	VICPOLE
MODEL & CAT. NO.	URD / VP7M/KN-POWERCOR
LENGTH & STRENGTH	6.9/KN
COLOR	GALV
BRACKET:	STANDARD
MANUFACTURER	VICPOLE
TYPE	PART OF POLE
LENGTH	
COLOR	GALV
COUNCIL	CITY OF GREATER BENDIGO
CONSTRUCTION NOTES	

VESI STANDARDS

AS OF 1/7/21 URD PROJECTS WILL BE AUDITED TO THE VESI "URBAN RESIDENTIAL DEVELOPMENT (URD) DESIGN & CONSTRUCTION STANDARD" FOR ITEMS NOT INCLUDED IN THE VESI STANDARD REFER TO POWERCOR STANDARDS
 VESI STANDARDS CAN BE VIEWED AT:
<https://www.vesi.com.au/index.php/construction-industry-guidelines>

CONDUIT BENDS

ALL LV MAINS & HV CONDUIT BENDS ARE 90° UNLESS OTHERWISE SHOWN ON THE PLAN
 MINIMUM BENDING RADIUS APPLY
 REFER TO VESI STANDARDS SECTION 5.8.2 & 5.8.3
<https://www.vesi.com.au/index.php/construction-industry-guidelines>



CABLE SCHEDULE								
CABLE ID	VOLTAGE	CABLE LOCATION	CABLE DETAILS	CABLE LENGTH (m)	CABLE DE-RATING	ESTIMATED CABLE PULLING TENSION		
						FORWARD	REVERSE	MAX
(N) HV1	22kV CABLE	FROM HV CHP 139 (ILIS-402986) "A" TO "TEGGANA-MURPHY" KIOSK S/S "B"	185 3c 22 a.x.h.c	130	283A	3.6kN	3.5kN	20kN
(N) LV1	LV MAINS CABLE	FROM "TEGGANA-MURPHY" KIOSK S/S "B" TO LV IE "C" OS LOT 2 MURPHY STREET	240 4c LV s.a.x.	90	290A	-1kN	-1kN	28.8kN
(N) LV2		FROM "TEGGANA-MURPHY" KIOSK S/S "B" TO LV STJ "D" OS LOT 2 TEGGANA COURT CCT#2	240 4c LV s.a.x.	280	245A	3.5kN	4.4kN	28.8kN
(N) LV3		FROM "TEGGANA-MURPHY" KIOSK S/S "B" TO LV STJ "E" OS LOT 13 TEGGANA COURT CCT#3	240 4c LV s.a.x.	290	245A	5.0kN	4.6kN	28.8kN
(N) LV4		FROM "TEGGANA-MURPHY" KIOSK S/S "B" TO LV STJ "F" OS LOT 12 TEGGANA COURT CCT#4	240 4c LV s.a.x.	280	245A	3.5kN	4.4kN	28.8kN
(N) LV5		FROM "TEGGANA-MURPHY" KIOSK S/S "B" TO LV STJ "G" OS LOT 13 TEGGANA COURT CCT#5	240 4c LV s.a.x.	290	245A	5.0kN	4.6kN	28.8kN
(N) LV51	SERVICE CABLE		35 4c LV c.x.	260	N/A			
(N) LV52			16 4c LV c.x.	30	N/A			
(N) PL1	P/L CABLE		6 2c LV c.v.	120	N/A			

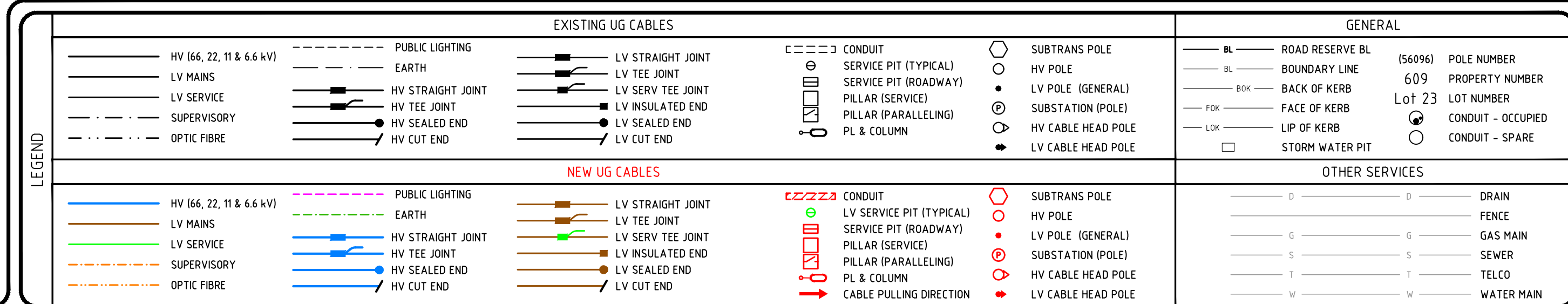
PLEASE NOTE - CABLE LENGTHS HAVE BEEN DRAWN POINT TO POINT AND DO NOT INCLUDE ANY EXTRA CABLE LENGTHS

STREET NAME	ELECTRICITY		PUBLIC LIGHT		TELSTRA/COMMS		GAS		WATER		SEWER	
	OFFSET	SIDE	• OFFSET	SIDE	OFFSET	SIDE	OFFSET	SIDE	OFFSET	SIDE	OFFSET	SIDE
MURPHY STREET	VARIES OH	EAST	10m BOK 5.8m BL	EAST	3.3-3.8 & 5.1-6.4	EAST	4.60m	WEST	3.60m	WEST	VARIES	EAST
TEGGANA COURT	100m	EAST,SOUTH & NORTH	0.8m BOK 2.65m BL	NORTH	1.80m	SOUTH	1.70m	NORTH	2.10m	NORTH		

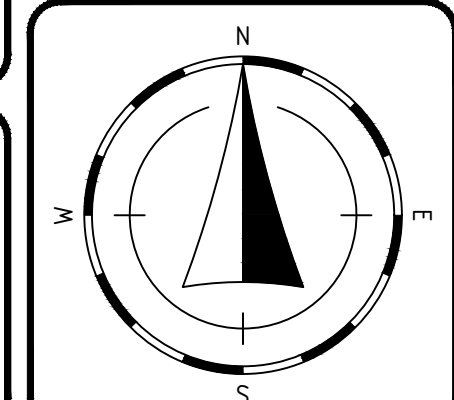
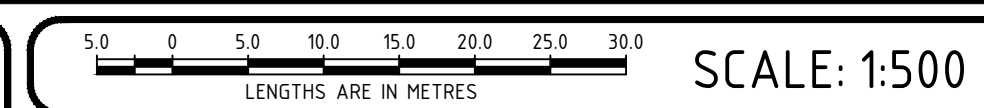
* VARIATIONS WILL BE SHOWN ON THE PLAN-TRANSITION FROM 3.1 TO 2.1 IN FRONT OF LOT 1

EN TECHNICAL STANDARDS
 FOR TRENCHING, CABLE SEPARATION, MIN. DEPTHS REFER TO GA211
 FOR PIT INSTALLATION REFER TO GS201
 FOR ROAD CROSSING CONDUITS REFER TO GA080

- MINIMUM 20m BENDING RADIUS ON ALL Ø125 CONDUIT
 - CONDUIT WITHIN PROPERTY BOUNDARY TO BE SUPPLIED AND INSTALLED BY DEVELOPER
 - WARNING: IF TRENCHING ADJACENT TO STRUCTURES (i.e. POLES, ROAD SIGNS, ETC) IT IS THE CONTRACTORS RESPONSIBILITY TO ENSURE THAT THEY ARE SUFFICIENTLY PROPPED/SECURED TO PREVENT MOVEMENT AND DAMAGE



WARNING BEWARE OF UNDERGROUND SERVICES
 THE LOCATIONS OF UNDERGROUND SERVICES ARE APPROXIMATE ONLY AND THEIR EXACT POSITION SHOULD BE PROVEN ON SITE. NO GUARANTEE IS GIVEN THAT ALL EXISTING SERVICES ARE SHOWN.



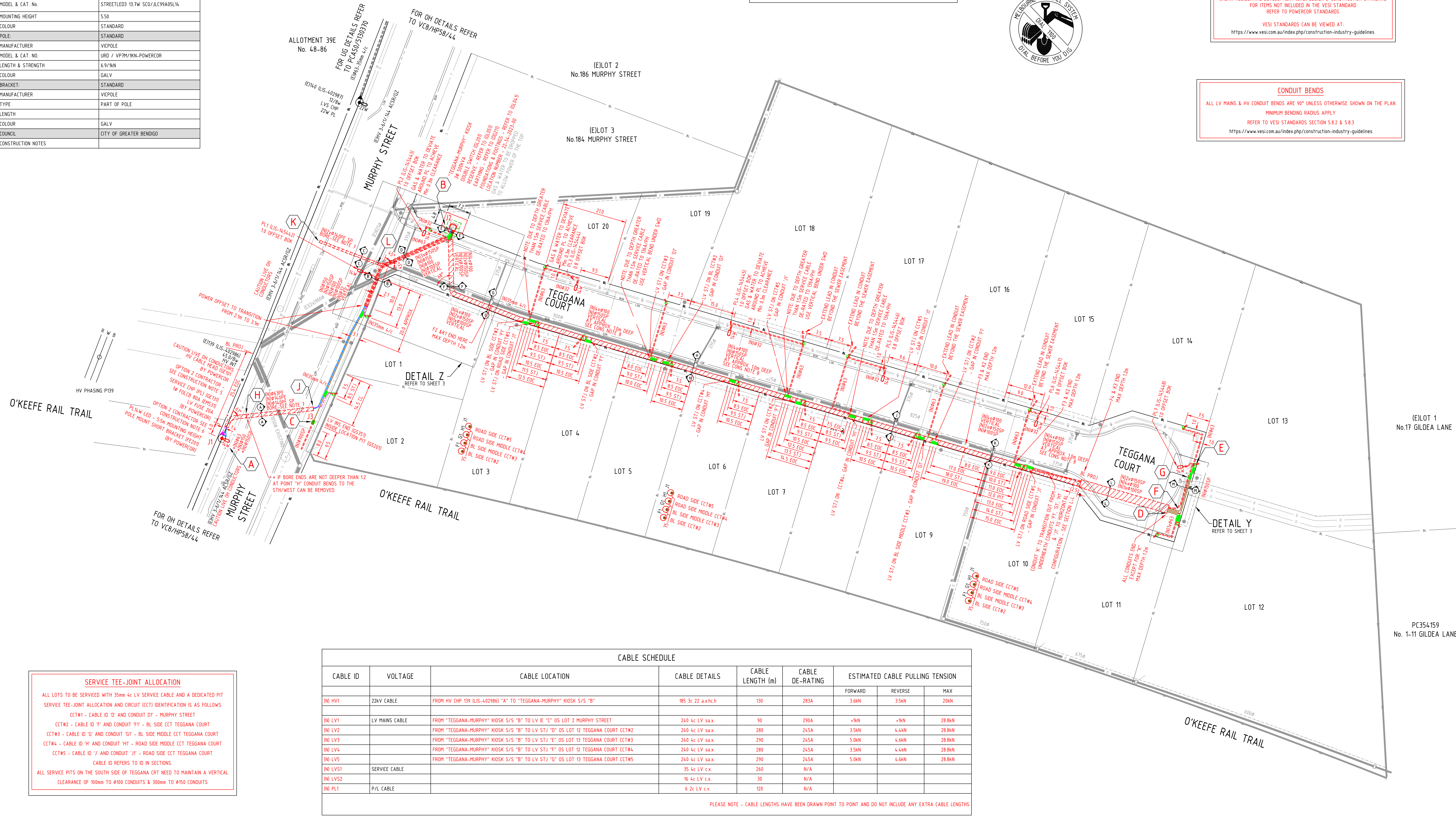
REVISION			
DRAWING NUMBER	PCA40 5134547	1	SHEET 1 OF 3
UG CONSTRUCTION PLAN			
MURPHY STREET ESTATE - STAGE 1 (INDUSTRIAL)			
MURPHY STREET, TEGGANA COURT			
EAST BENDIGO			
DRAWN	T FLINT (FPC)	CHECKER	A FLINT (FPC)
DATE	30/08/22	DATE	8/02/22
DESIGNER	A FLINT (FPC)	APPROVER	S REIDY (PCA)
DATE	20/10/2022	DATE	20/10/2022

PUBLIC LIGHTING SCHEDULE	
FOR PL POLE No.s	PL1 - PL7
LANTERN	STANDARD
WATTAGE & TYPE	14W LED (L14)
MANUFACTURER	SYLVANIA
MODEL & CAT. No.	STREETLED3 13.7W SCL0/JLCS9A05L4
MOUNTING HEIGHT	5.50
COLOUR	STANDARD
POLE:	STANDARD
MANUFACTURER	VICPOLE
MODEL & CAT. No.	URD / VP7M/KN-POWERCOR
LENGTH & STRENGTH	6.9/18N
COLOUR	GALV
BRACKET:	STANDARD
MANUFACTURER	VICPOLE
TYPE	PART OF POLE
LENGTH	
COLOUR	GALV
COUNCIL	CITY OF GREATER BENDIGO
CONSTRUCTION NOTES	

LEAD IN CONDUITS
 EXTEND LEAD IN CONDUIT BEYOND THE SEWER EASEMENT ON LOT 3, 4, 5, 6, 7, 8, 9 & 10 TEGGANA COURT

VESI STANDARDS
 AS OF 1/7/21 URD PROJECTS WILL BE AUDITED TO THE VESI "URBAN RESIDENTIAL DEVELOPMENT (URD) DESIGN & CONSTRUCTION STANDARD" FOR ITEMS NOT INCLUDED IN THE VESI STANDARD REFER TO POWERCOR STANDARDS
 VESI STANDARDS CAN BE VIEWED AT:
<https://www.vesi.com.au/index.php/construction-industry-guidelines>

CONDUIT BENDS
 ALL LV MAINS & HV CONDUIT BENDS ARE 90° UNLESS OTHERWISE SHOWN ON THE PLAN
 MINIMUM BENDING RADIUS APPLY
 REFER TO VESI STANDARDS SECTION 5.8.2 & 5.8.3
<https://www.vesi.com.au/index.php/construction-industry-guidelines>



SERVICE TEE-JOINT ALLOCATION
 ALL LOTS TO BE SERVICED WITH 35mm 4c LV SERVICE CABLE AND A DEDICATED PIT SERVICE TEE-JOINT ALLOCATION AND CIRCUIT (CCT) IDENTIFICATION IS AS FOLLOWS
 CCT#1 - CABLE ID 'D' AND CONDUIT 'D' - MURPHY STREET
 CCT#2 - CABLE ID 'F' AND CONDUIT 'F' - BL SIDE CCT TEGGANA COURT
 CCT#3 - CABLE ID 'G' AND CONDUIT 'G' - BL SIDE MIDDLE CCT TEGGANA COURT
 CCT#4 - CABLE ID 'H' AND CONDUIT 'H' - ROAD SIDE MIDDLE CCT TEGGANA COURT
 CCT#5 - CABLE ID 'J' AND CONDUIT 'J' - ROAD SIDE CCT TEGGANA COURT
 CABLE ID REFERS TO ID IN SECTIONS.
 ALL SERVICE PITS ON THE SOUTH SIDE OF TEGGANA CRT NEED TO MAINTAIN A VERTICAL CLEARANCE OF 100mm TO 100 CONDUITS & 300mm TO 150 CONDUITS

CABLE ID	VOLTAGE	CABLE LOCATION	CABLE DETAILS	CABLE LENGTH (m)	CABLE DE-RATING	ESTIMATED CABLE PULLING TENSION		
						FORWARD	REVERSE	MAX
(N) HV1	22kV CABLE	FROM HV CHP 139 (ILIS-402986) "A" TO "TEGGANA-MURPHY" KIOSK S/S "B"	185 3c 22 a.x.h.c	190	283A	3.6kN	3.5kN	20kN
(N) LV1	LV MAINS CABLE	FROM "TEGGANA-MURPHY" KIOSK S/S "B" TO LV IE "C" OS LOT 2 MURPHY STREET	240 4c LV s.a.x.	90	290A	<1kN	<1kN	28.8kN
(N) LV2		FROM "TEGGANA-MURPHY" KIOSK S/S "B" TO LV STJ "D" OS LOT 12 TEGGANA COURT CCT#2	240 4c LV s.a.x.	280	245A	3.5kN	4.4kN	28.8kN
(N) LV3		FROM "TEGGANA-MURPHY" KIOSK S/S "B" TO LV STJ "E" OS LOT 13 TEGGANA COURT CCT#3	240 4c LV s.a.x.	290	245A	5.0kN	4.6kN	28.8kN
(N) LV4		FROM "TEGGANA-MURPHY" KIOSK S/S "B" TO LV STJ "F" OS LOT 12 TEGGANA COURT CCT#4	240 4c LV s.a.x.	280	245A	3.5kN	4.4kN	28.8kN
(N) LV5		FROM "TEGGANA-MURPHY" KIOSK S/S "B" TO LV STJ "G" OS LOT 13 TEGGANA COURT CCT#5	240 4c LV s.a.x.	290	245A	5.0kN	4.6kN	28.8kN
(N) LVS1	SERVICE CABLE		35 4c LV c.x.	260	N/A			
(N) LVS2	SERVICE CABLE		16 4c LV c.x.	30	N/A			
(N) PL1	P/L CABLE		6 2c LV c.v.	100	N/A			

PLEASE NOTE - CABLE LENGTHS HAVE BEEN DRAWN POINT TO POINT AND DO NOT INCLUDE ANY EXTRA CABLE LENGTHS

EN TECHNICAL STANDARDS
 FOR TRENCHING, CABLE SEPARATION, MIN. DEPTHS REFER TO GA211
 FOR PIT INSTALLATION REFER TO GS201
 FOR ROAD CROSSING CONDUITS REFER TO GA080

- MINIMUM 2.0m BENDING RADIUS ON ALL Ø125 CONDUIT
 - CONDUIT WITHIN PROPERTY BOUNDARY TO BE SUPPLIED AND INSTALLED BY DEVELOPER
 - WARNING: IF TRENCHING ADJACENT TO STRUCTURES (i.e. POLES, ROAD SIGNS, ETC) IT IS THE CONTRACTOR'S RESPONSIBILITY TO ENSURE THAT THEY ARE SUFFICIENTLY PROPPED/SECURED TO PREVENT MOVEMENT AND DAMAGE

LEGEND		EXISTING UG CABLES		NEW UG CABLES		GENERAL	
— HV 11kV, 22, 11 & 6.6 kV	— PUBLIC LIGHTING	— LV STRAIGHT JOINT	— CONDUIT	— LV STRAIGHT JOINT	— CONDUIT	— ROAD RESERVE BL	— POLE NUMBER
— LV MAINS	— EARTH	— LV TEE JOINT	— SERVICE PIT (TYPICAL)	— LV TEE JOINT	— SERVICE PIT (ROADWAY)	— BOUNDARY LINE	— PROPERTY NUMBER
— LV SERVICE	— HV STRAIGHT JOINT	— LV SERV TEE JOINT	— PILLAR (SERVABLE)	— LV SERV TEE JOINT	— PILLAR (SERVABLE)	— BACK OF KERB	— LOT NUMBER
— SUPERVISORY	— HV TEE JOINT	— LV INSULATED END	— PILLAR (PARALLELING)	— LV INSULATED END	— PILLAR (PARALLELING)	— FACE OF KERB	— CONDUIT - OCCUPIED
— OPTIC FIBRE	— HV CUT END	— LV SEALED END	— PL & COLUMN	— LV SEALED END	— PL & COLUMN	— LIP OF KERB	— CONDUIT - SPARE
		— LV CUT END		— LV CUT END		— STORM WATER PIT	

WARNING BEWARE OF UNDERGROUND SERVICES
 THE LOCATIONS OF UNDERGROUND SERVICES ARE APPROXIMATE ONLY AND THEIR EXACT POSITION SHOULD BE PROVEN ON SITE. NO GUARANTEE IS GIVEN THAT ALL EXISTING SERVICES ARE SHOWN.

PROJECT NUMBER	5134547
ROAD DIRECTORY	VICROADS MAP REFERENCE 44 FS
MAP PROJECTION	MGA ZONE 55
FEEDER / SWITCHING ZONE	BG0022 / SW2-5478180
MASTER PLAN REFERENCE DRAWING	PCA40/6048807/1
DEVELOPER	ARBOR ESTATES PTY LTD
No. OF LOTS	20 LOTS (INDUSTRIAL)
PROJECT MANAGER	S FLANAGAN

SCALE: 1:500
 LENGTHS ARE IN METRES

CITIPower
 Electricity Networks
 Locked Bag 14090
 Melbourne 8001
www.citipower.com.au
www.powercor.com.au

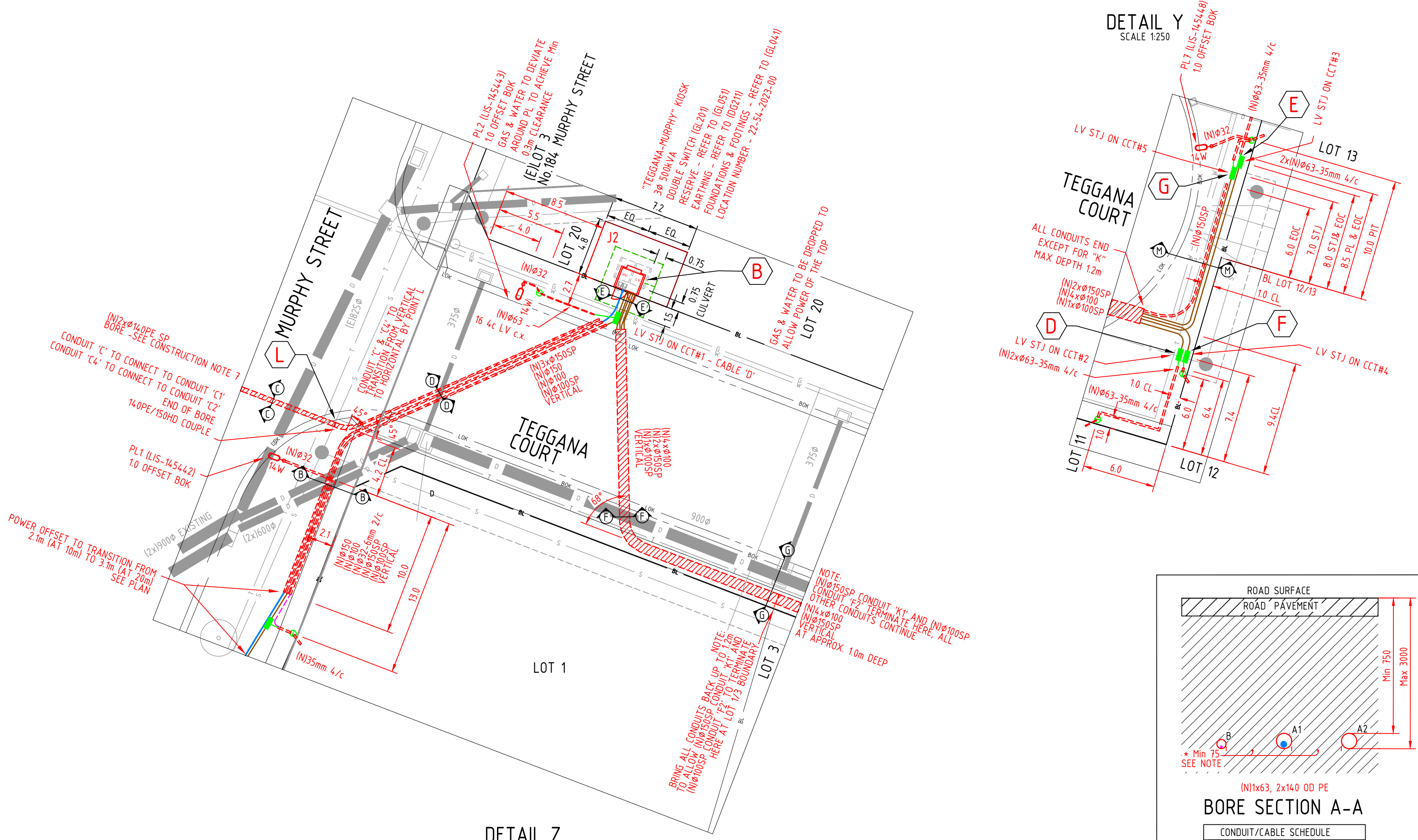
REVISION			
DRAWING NUMBER	PCA40 5134547	2	SHEET 2 OF 3
UG CONSTRUCTION PLAN			
MURPHY STREET ESTATE - STAGE 1 (INDUSTRIAL)			
MURPHY STREET, TEGGANA COURT			
EAST BENDIGO			
DRAWN	T FLINT (FPC)	CHECKED	A FLINT (FPC)
DATE	30/08/22	DATE	8/02/22
DESIGNED	A FLINT (FPC)	APPROVED	S REIDY (PCA)
DATE	20/10/2022	DATE	20/10/2022



VESI STANDARDS
 AS OF 1/7/21 URD PROJECTS WILL BE AUDITED TO THE VESI 'URBAN RESIDENTIAL DEVELOPMENT (URD) DESIGN & CONSTRUCTION STANDARD' FOR ITEMS NOT INCLUDED IN THE VESI STANDARD REFER TO POWERCOR STANDARDS
 VESI STANDARDS CAN BE VIEWED AT:
<https://www.vesi.com.au/index.php/construction-industry-guidelines>

CONDUIT BENDS
 ALL LV MAINS & HV CONDUIT BENDS ARE 90° UNLESS OTHERWISE SHOWN ON THE PLAN
 MINIMUM BENDING RADIUS APPLY
 REFER TO VESI STANDARDS SECTION 5.8.2 & 5.8.3
<https://www.vesi.com.au/index.php/construction-industry-guidelines>

SERVICE TEE-JOINT ALLOCATION
 ALL LOTS TO BE SERVICED WITH 35mm 4c LV SERVICE CABLE AND A DEDICATED PIT
 SERVICE TEE-JOINT ALLOCATION AND CIRCUIT (CCT) IDENTIFICATION IS AS FOLLOWS
 CCT#1 - CABLE ID 'D' AND CONDUIT 'D' - MURPHY STREET
 CCT#2 - CABLE ID 'G' AND CONDUIT 'F' - BL SIDE CCT TEGGANA COURT
 CCT#3 - CABLE ID 'G' AND CONDUIT 'G' - BL SIDE MIDDLE CCT TEGGANA COURT
 CCT#4 - CABLE ID 'H' AND CONDUIT 'H' - ROAD SIDE MIDDLE CCT TEGGANA COURT
 CCT#5 - CABLE ID 'J' AND CONDUIT 'J' - ROAD SIDE CCT TEGGANA COURT
 CABLE ID REFERS TO ID IN SECTIONS
 ALL SERVICE PITS ON THE SOUTH SIDE OF TEGGANA CRT NEED TO MAINTAIN A VERTICAL CLEARANCE OF 100mm TO #100 CONDUITS & 300mm TO #150 CONDUITS



DETAIL Y SCALE 1:250

DETAIL Z SCALE 1:250

CONSTRUCTION NOTES:
 VARIATIONS:
 1. THE FINAL AUDIT OF THIS PROJECT WILL BE ASSESSED ON THE ACCURACY OF THE AS INSTALLED ASSETS COMPARED TO THIS APPROVED CONSTRUCTION PLAN.
 ANY VARIATIONS MUST BE APPROVED PRIOR TO MAKING THE ALTERATIONS (CONTACT THE PROJECT MANAGER TO SEEK APPROVAL FROM POWERCOR)

DEPTHS OVER 15m
 2. IT IS NOT DESIRABLE FOR CABLES OR CONDUITS TO BE INSTALLED AT A DEPTH GREATER THAN 15m. THIS INCLUDES DIPPING UNDER OTHER SERVICES. SHOULD IT BE NECESSARY TO INSTALL CABLES OR CONDUITS GREATER THAN 15m DEEP APPROVAL MUST BE OBTAINED (IF NOT ALREADY SHOWN ON THIS PLAN).
 CABLES INSTALLED DEEPER THAN 15m MUST BE IN CONDUIT & AN ADDITIONAL SPARE CONDUIT INSTALLED

3. CONDUIT ENDS CANNOT BE AT EXCESSIVE DEPTHS FOR FUTURE ACCESS SAFETY REASONS. CONDUIT ENDS SHOULD BE RAISED UP TO NORMAL INSTALLATION DEPTHS WHERE POSSIBLE, BUT SHALL NOT BE DEEPER THAN 12m. IF CONDUITS NEED TO BE EXTENDED TO ACHIEVE THIS CONTACT THE ELECTRICAL PROJECT MANAGER TO OBTAIN APPROVAL

SECTIONS:
 4. IF CLEARANCE AND COVER CAN BE MAINTAINED THE FIRST CHOICE IS TO INSTALL POWER OVER THE TOP OF OTHER SERVICES. IF IT IS POSSIBLE TO INSTALL POWER OVER THE TOP OF OTHER SERVICES IGNORE THE SECTION AND INSTALL POWER OVER THE TOP (MINIMUM DEPTH OF 600mm). HOWEVER IF THIS IS NOT POSSIBLE (TO GO OVER THE TOP) REVERT TO THE SECTION PROVIDED. CABLES TO STAY WITHIN DEPTH RANGE GIVEN, OTHERWISE SEEK PROJECT MANAGER APPROVAL

LIVE CABLES:
 5. HV CABLE HEAD TERMINATION - CAUTION LIVE OH CONDUCTORS - NO GO ZONE APPLIES - A POWERCOR PERMIT TO WORK WILL BE REQUIRED PRIOR TO EXCAVATION LEAVE SUFFICIENT HV CABLE FOR POWERCOR TO COMPLETE HV CHP AT THE IN AT POINT 'A'.
 BURY CABLE AND INSTALL MARKER PIT AT CABLE END. COIL CABLE IF APPROPRIATE (OBSERVE MIN CABLE RADIUS). IF COILING IS NOT SUITABLE RUN CABLE NORTH OR SOUTH OF POLE UNDER HV OH.
 DO NOT RUN CABLE UP THE POLE FOR SAFETY REASONS
 OPTION 2A CONTRACTOR TO INSTALL EARTH AS PER PCA STANDARDS - DG196 (WOOD POLE) & DG291 (CONCRETE POLE) - ONLY UNDERGROUND COMPONENTS. LEAVE EARTH COILED AT THE FOOT OF POLE FOR PCA TO COMPLETE AT THE IN.

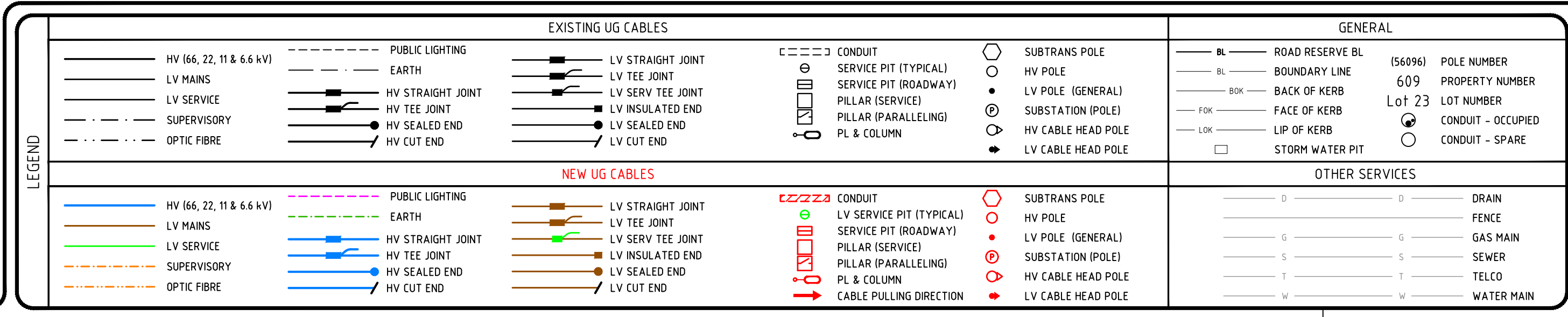
6. LV SERVICE CABLE HEAD TERMINATION - CAUTION LIVE OH CONDUCTORS - NO GO ZONE APPLIES - A POWERCOR PERMIT TO WORK WILL BE REQUIRED PRIOR TO EXCAVATION. ATTACH LV5 UG CABLE TO POLE AND INSTALL ALL (G191 (WOOD)) COMPONENTS BELOW THE 4m MARK, INCLUDING COVER GUARD. LEAVE SUFFICIENT CABLE FOR PCA TO COMPLETE CHP AT THE IN. CONTRACTOR SHALL NOT WORK ABOVE THE 4m MARK

7. BORE WORKS - THE NEW CONDUIT 'H' TO 'J' & 'K' TO 'L' WILL NEED TO BE INSTALLED VIA A DIRECTIONAL BORE. ENSURE INSTALLATION DETAILS ARE RECORDED ON A BORE LOG WHICH INCLUDES RUNNING CHAINAGE (EVERY 3m). AT EACH 3m CHAINAGE RECORD THE DEPTH FROM TOP OF CONDUIT/OFFSET FROM BL (IF APPLICABLE)
 LOCATE EXISTING STORM WATER, WATER & GAS VIA 'DIAL BEFORE YOU DIG' AND EXCAVATE SECTIONS OF ALL SERVICES TO PROVE LOCATIONS. ENSURE THAT THE NEW BORE MAINTAINS THE REQUIRED VERTICAL CLEARANCE OF 300mm TO STORM WATER, 225mm TO WATER & 150mm TO GAS.

8. SERVICE PITS TEGGANA CRT
 DUE TO A CONDUIT OFF SET OF 10m, AND VARYING CONDUIT SPREAD, ALL SERVICE PITS ON THE SOUTH SIDE OF TEGGANA CRT NEED TO MAINTAIN A VERTICAL CLEARANCE OF 100mm TO #100 CONDUITS & 300mm TO #150 CONDUITS AS IT IS POSSIBLE THAT PART OF THE SERVICE MAY BE OVER CONDUIT. CONDUITS TO BE INSTALLED AT AN APPROPRIATE DEPTH (APPROX 1.0m), KEEPING IN MIND THE NEED TO HAVE CONDUIT ENDS NO DEEPER THAN 12m.

EN TECHNICAL STANDARDS
 FOR TRENCHING, CABLE SEPARATION, MIN. DEPTHS REFER TO GA211
 FOR PIT INSTALLATION REFER TO GS201
 FOR ROAD CROSSING CONDUITS REFER TO GA080

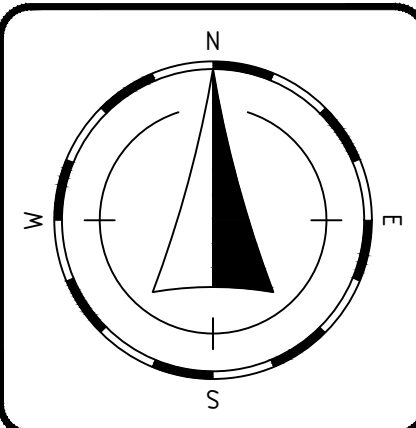
- MINIMUM 2.0m BENDING RADIUS ON ALL #125 CONDUIT
 - CONDUIT WITHIN PROPERTY BOUNDARY TO BE SUPPLIED AND INSTALLED BY DEVELOPER
 - WARNING: IF TRENCHING ADJACENT TO STRUCTURES (i.e. POLES, ROAD SIGNS, ETC.) IT IS THE CONTRACTORS RESPONSIBILITY TO ENSURE THAT THEY ARE SUFFICIENTLY PROPPED/SECURED TO PREVENT MOVEMENT AND DAMAGE



WARNING BEWARE OF UNDERGROUND SERVICES
 THE LOCATIONS OF UNDERGROUND SERVICES ARE APPROXIMATE ONLY AND THEIR EXACT POSITION SHOULD BE PROVEN ON SITE. NO GUARANTEE IS GIVEN THAT ALL EXISTING SERVICES ARE SHOWN.

PROJECT NUMBER	5134547
ROAD DIRECTORY	VICROADS MAP REFERENCE 04 FS
MAP PROJECTION	MGA ZONE 55
FEEDER / SWITCHING ZONE	BG0022 / SW2-5478180
MASTER PLAN REFERENCE DRAWING	PCA40/604/8807/1
DEVELOPER	ARBOR ESTATES PTY LTD
No. OF LOTS	20 LOTS (INDUSTRIAL)
PROJECT MANAGER	S FLANAGAN

SCALE: 1:500
 LENGTHS ARE IN METRES



REVISION			
DRAWING NUMBER	PCA40 5134547	3	SHEET 3 OF 3
UG CONSTRUCTION PLAN			
MURPHY STREET ESTATE - STAGE 1 (INDUSTRIAL)			
MURPHY STREET, TEGGANA COURT			
EAST BENDIGO			
DRAWN	T FLINT (FPC)	CHECKED	A FLINT (FPC)
	30/08/22		8/02/22
APPROVED	S REIDY (PCA)		
	20/10/2022		