

BUSHFIRE ATTACK LEVEL REPORT

Ref No: 24406 – Lots 116 to 154

SITE DETAILS

LOCATION: Lots 116 to 154 - Discover Marong
Hills Road, Malone Park Road & Salvarezza Road, Marong

DATE: 11th January, 2017

CLIENT: Arbor Estates

Type of Building Works

- New Class 1 building
- New Class 10a building
- New Class 2 building
- New Class 3 building

Description of building work:
New Residence

Site classification

BAL- 12.5

This property is in a designated bushfire prone area; therefore a minimum of **BAL-12.5** must be achieved.

Site Information

1. Relevant Fire Danger Index: FDI: 50 FDI: 100

2. Vegetation within 100m in all directions:

Vegetation classification (see Table 2.3)	North	South	East	West
Group B - Woodland				
Group G - Grassland	✓	✓	✓	✓
Exclusions (where applicable)	See below Exclusion descriptions			
	f	f		f

Distance of the site from classified vegetation (see clause 2.2.4)

Distance to classified vegetation	Show distances in metres			
	N/A	N/A	N/A	N/A

Effective slope of land under the classified vegetation

Effective slope	Upslope			
	Upslope or 0°	Upslope or 0° ✓	Upslope or 0° ✓	Upslope or 0°
Slope under the classified vegetation	Downslope			
	>0° to 5° ✓	>0° to 5°	>0° to 5°	>0° to 5° ✓
	>5° to 10°	>5° to 10°	>5° to 10°	>5° to 10°
	>10° to 15°	>10° to 15°	>10° to 15°	>10° to 15°

BAL for each side of the site	BAL-12.5	BAL-12.5	BAL-12.5	BAL-12.5
-------------------------------	-----------------	-----------------	-----------------	-----------------

Exclusions (where applicable)

- Vegetation of any type that is more than 100 m from the site.
- Single areas of vegetation less than 1 ha in area and not within 100 m of other areas of vegetation being classified.
- Multiple areas of vegetation less than 0.25 ha in area and not within 20 m of the site, or each other.
- Strips of vegetation less than 20 m in width regardless of length and not within 20 m of the site or each other, or other areas of vegetation being classified.
- Non-vegetated areas, including waterways, roads, footpaths, buildings and rocky outcrops.
- Low threat vegetation, including grassland managed in a minimal fuel condition, maintained lawns, golf courses, maintained public reserves and parklands, vineyards, orchards, cultivated gardens, commercial nurseries, nature strips and windbreaks.

NOTE: Minimal fuel condition means there is insufficient fuel available to significantly increase the severity of the bushfire attack (recognizable as short-cropped grass for example, to a nominal height of 100 mm).

3. **BAL – 12.5 Construction requirements:**

- a. **Sub floor supports:** No special construction requirements.
- b. **Floors:** No special construction requirements.
- c. **External walls:**
Non-combustible material.

Parts less than 400 mm above ground or decks etc to be of non-combustible material or 6 mm fibre cement clad or bushfire resistant/naturally fire resistant timber.

All joints in the external surface material of walls shall be covered, sealed, overlapped, backed or butt-jointed to prevent gaps greater than 3 mm. Vents and weepholes in external walls shall be screened with a mesh with a maximum aperture of 2 mm, made of corrosion-resistant steel, bronze or aluminium, except where the vents and weepholes are less than 3 mm (see Clause 3.6), or are located in an external wall of a subfloor space.

- d. **External windows:**
Protected by bushfire shutters or completely screened with steel, bronze or aluminium mesh or 4 mm Grade A safety glass or glass blocks within 400 mm of ground, deck etc. Operable portion metal screened with frame of metal or metal reinforced PVC-U or bushfire resisting timber
- e. **External doors:**
Protected by bushfire shutter or screened with steel, bronze or aluminium mesh or glazed with 5 mm toughened glass, non-combustible or 35 mm solid timber for 400 mm above threshold, metal or bushfire resisting timber framed for 400 mm above ground, decking, etc, tight-fitting with weather strips at base.
- f. **Roofs:**
Non-combustible covering. Roof/wall junction sealed. Openings fitted with non-combustible ember guards. Roof to be fully sarked
- g. **Verandas / decks etc:**
Enclosed sub-floor space – no special requirement for materials except within 400 mm of ground. No special requirements for supports or framing. Decking to be non-combustible or bushfire resistant within 300 mm horizontally and 400 mm vertically from a glazed element

- 4. For more detailed options refer to Section 5 of AS3959-2009.
- 5. The bush rating supplied in this report complies with the requirements of AS3959-2009; however this rating does not imply that any building constructed on the site is immune to destruction by bushfire.

Therefore the property owner should make their own assessment of construction requirements to protect any building on the site from bushfire damage whether by direct bushfire attack or by ember attack.

6. This report is for the use only of the party to whom it is addressed, and for the purposes for which it was prepared, and for no other purpose. No responsibility is accepted to any third party which may use, or rely on, the whole, or any part, of the content of this report. This report has been prepared on the basis of specific instructions and information provided by, or on behalf of, the party whom it is addressed, and for the use of that party in its particular circumstances, for its particular purpose. Its contents and conclusions may therefore be inappropriate for any third party in the context of that party's particular purpose or circumstances. Any third party should obtain its own independent report or other professional advice and in no way rely on this report.

Yours faithfully,
 ALLIED DESIGN Consultants
 per: *David Lewin*

HILLS ROAD

(18)

33-00	712/m ²	86	18-00	712/m ²	87	18-00	712/m ²	88	17-40	663/m ²	89	17-40	663/m ²	90	17-40	663/m ²	91	17-40	663/m ²	92	17-00	663/m ²	93	18-00	702/m ²	94	18-00	702/m ²	95	17-40	663/m ²	96	17-40	663/m ²	33-18	751/m ²	181	19-00	726/m ²	180	
15-00	38-00	85	19-00	702/m ²	83	19-00	702/m ²	106	18-00	702/m ²	105	18-00	663/m ²	104	17-40	663/m ²	103	17-40	663/m ²	102	17-00	663/m ²	101	18-00	702/m ²	100	18-00	702/m ²	99	17-40	663/m ²	98	17-40	663/m ²	97	19-00	726/m ²	178	19-00	726/m ²	179
19-00	38-00	84	19-00	722/m ²	82	19-00	722/m ²	107	18-00	702/m ²	108	18-00	663/m ²	109	17-40	663/m ²	110	17-40	663/m ²	111	17-00	663/m ²	112	18-00	702/m ²	113	18-00	702/m ²	114	17-40	663/m ²	115	17-40	663/m ²	38-28	727/m ²	178	19-00	726/m ²	179	
17-00	35-00	83	17-00	755/m ²	81	17-00	755/m ²	124	19-00	686/m ²	123	19-00	685/m ²	122	18-55	668/m ²	121	18-55	668/m ²	120	18-80	677/m ²	119	19-00	685/m ²	118	19-00	685/m ²	117	18-40	660/m ²	116	18-40	660/m ²	35-32	761/m ²	178	19-00	726/m ²	179	

(18)

33-00	705/m ²	78	18-00	614/m ²	77	18-00	614/m ²	125	18-00	679/m ²	126	18-00	680/m ²	127	17-50	681/m ²	128	17-50	681/m ²	129	17-50	682/m ²	130	18-00	682/m ²	131	18-00	682/m ²	132	17-50	682/m ²	133	17-50	682/m ²	134	17-50	682/m ²	32-76	701/m ²	173	16-75	651/m ²	172
16-68	36-00	76	18-00	657/m ²	75	18-00	657/m ²	144	18-00	684/m ²	143	18-00	684/m ²	142	18-00	684/m ²	141	18-00	684/m ²	140	17-50	685/m ²	139	18-00	685/m ²	138	18-00	685/m ²	137	17-50	685/m ²	136	17-50	685/m ²	135	17-50	685/m ²	35-86	704/m ²	170	18-25	651/m ²	172
18-00	36-00	77	18-00	614/m ²	76	18-00	614/m ²	145	18-00	684/m ²	146	18-00	684/m ²	147	18-00	684/m ²	148	18-00	684/m ²	149	17-50	685/m ²	150	18-00	685/m ²	151	18-00	685/m ²	152	17-50	685/m ²	153	17-50	685/m ²	35-86	704/m ²	170	18-25	651/m ²	172			
18-00	36-00	77	18-00	614/m ²	76	18-00	614/m ²	145	18-00	684/m ²	146	18-00	684/m ²	147	18-00	684/m ²	148	18-00	684/m ²	149	17-50	685/m ²	150	18-00	685/m ²	151	18-00	685/m ²	152	17-50	685/m ²	153	17-50	685/m ²	35-86	704/m ²	170	18-25	651/m ²	172			

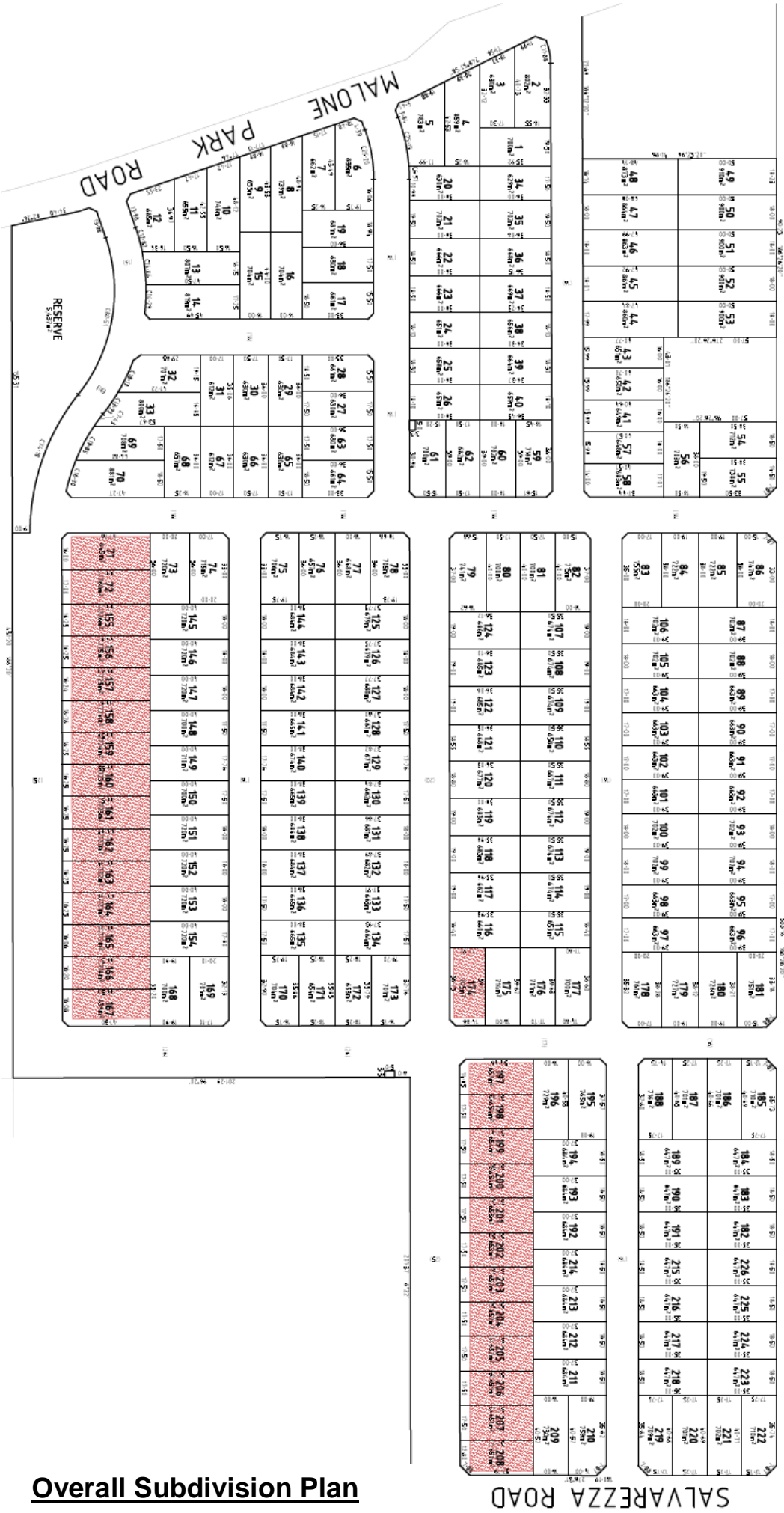
(18)

33-00	705/m ²	78	18-00	614/m ²	77	18-00	614/m ²	125	18-00	679/m ²	126	18-00	680/m ²	127	17-50	681/m ²	128	17-50	681/m ²	129	17-50	682/m ²	130	18-00	682/m ²	131	18-00	682/m ²	132	17-50	682/m ²	133	17-50	682/m ²	134	17-50	682/m ²	32-76	701/m ²	173	16-75	651/m ²	172
16-68	36-00	76	18-00	657/m ²	75	18-00	657/m ²	144	18-00	684/m ²	143	18-00	684/m ²	142	18-00	684/m ²	141	18-00	684/m ²	140	17-50	685/m ²	139	18-00	685/m ²	138	18-00	685/m ²	137	17-50	685/m ²	136	17-50	685/m ²	135	17-50	685/m ²	35-86	704/m ²	170	18-25	651/m ²	172
18-00	36-00	77	18-00	614/m ²	76	18-00	614/m ²	145	18-00	684/m ²	146	18-00	684/m ²	147	18-00	684/m ²	148	18-00	684/m ²	149	17-50	685/m ²	150	18-00	685/m ²	151	18-00	685/m ²	152	17-50	685/m ²	153	17-50	685/m ²	35-86	704/m ²	170	18-25	651/m ²	172			
18-00	36-00	77	18-00	614/m ²	76	18-00	614/m ²	145	18-00	684/m ²	146	18-00	684/m ²	147	18-00	684/m ²	148	18-00	684/m ²	149	17-50	685/m ²	150	18-00	685/m ²	151	18-00	685/m ²	152	17-50	685/m ²	153	17-50	685/m ²	35-86	704/m ²	170	18-25	651/m ²	172			

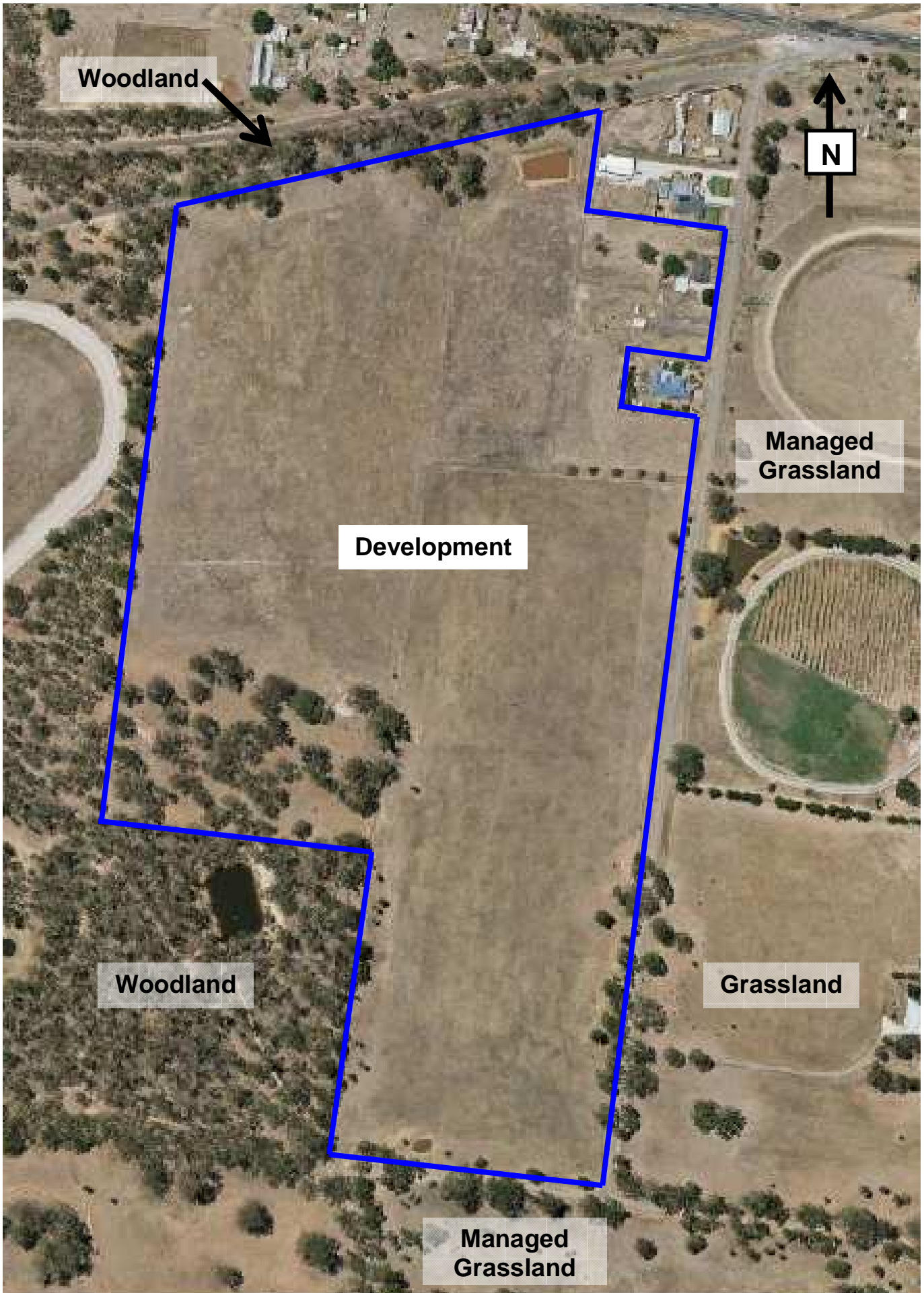
(18)

33-00	715/m ²	74	18-00	720/m ²	73	18-00	720/m ²	145	18-00	720/m ²	146	18-00	720/m ²	147	18-00	720/m ²	148	17-50	700/m ²	149	17-16	700/m ²	150	17-50	700/m ²	151	18-00	720/m ²	152	18-00	720/m ²	153	18-00	720/m ²	154	17-80	710/m ²	169	17-10	710/m ²	168
17-00	36-00	74	18-00	720/m ²	73	18-00	720/m ²	145	18-00	720/m ²	146	18-00	720/m ²	147	18-00	720/m ²	148	17-50	700/m ²	149	17-16	700/m ²	150	17-50	700/m ²	151	18-00	720/m ²	152	18-00	720/m ²	153	18-00	720/m ²	154	17-80	710/m ²	169	17-10	710/m ²	168
20-00	36-00	73	18-00	720/m ²	72	18-00	720/m ²	145	18-00	720/m ²	146	18-00	720/m ²	147	18-00	720/m ²	148	17-50	700/m ²	149	17-16	700/m ²	150	17-50	700/m ²	151	18-00	720/m ²	152	18-00	720/m ²	153	18-00	720/m ²	154	17-80	710/m ²	169	17-10	710/m ²	168
16-00	36-00	71	17-00	843/m ²	72	17-00	843/m ²	145	18-00	720/m ²	146	18-00	720/m ²	147	18-00	720/m ²	148	17-50	700/m ²	149	17-16	700/m ²	150	17-50	700/m ²	151	18-00	720/m ²	152	18-00	720/m ²	153	18-00	720/m ²	154	17-80	710/m ²	169	17-10	710/m ²	168

Subdivision Plan



Overall Subdivision Plan



Aerial Photo